

*St. Lucie  
County,  
Florida*

# IT PAYS TO RECYCLE RIGHT!

Allison Macdonald  
*Program Manager | Solid Waste Department*





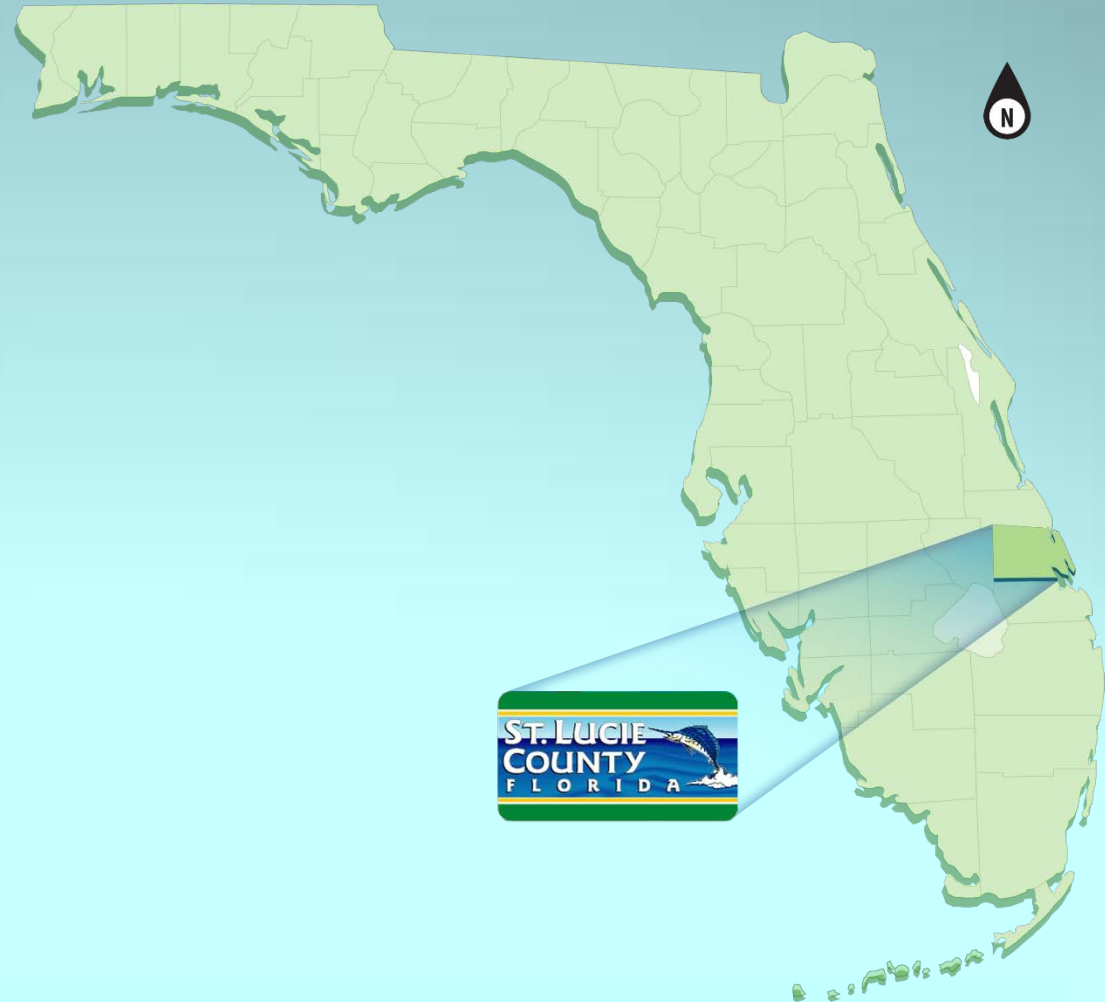
# Presentation Outline

- 1** *Project Implementation/Goals*
- 2** *Contracting*
- 3** *Construction*
- 4** *Marketing and Education*
- 5** *Results*



# Geographic Location

- St. Lucie County, Florida
  - Population Increase
  - Rapid Growth
- Baling and Recycling Facility Site
  - Baling Facility
  - Class I Balefill
  - C&D Debris Processing Facility
  - C&D Debris Landfill
  - Glass Recycling System
  - Yard Waste Processing Site
  - Single Stream Processing Facility





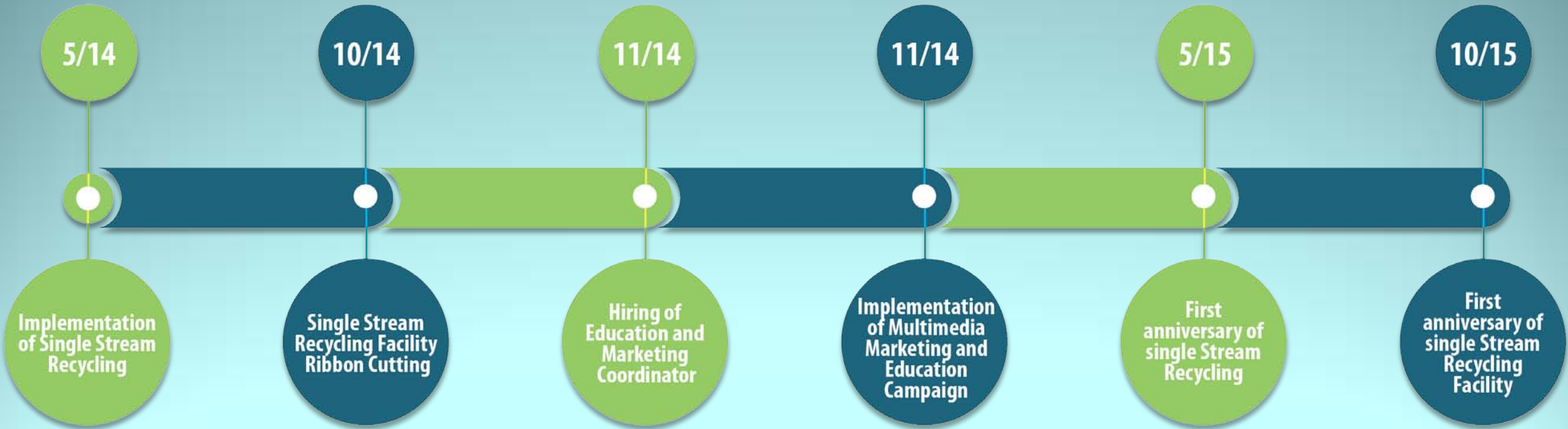
# Program Development/Goals

- Educate and encourage people to participate in our integrated solid waste management practices
- Implement innovative technologies for responsible solid waste management
- Divert reusable materials from the landfills
- Maximize the part of the waste stream that can be recovered and marketed





# Single Stream Recycling Timeline





# Innovative Contracting Agreements City of Port St. Lucie

- Establishing private-public partnership between St. Lucie County, City of Port St. Lucie, and the hauler (WastePro)
- Interlocal agreement with the City of Port St. Lucie
- Provides for guaranteed recyclable stream and revenue
- Minimizes risk to St. Lucie County
- Provides County-controlled disposal location for household waste
- Exclusive Commercial Agreement





# Innovative Contracting Agreements – Hauler

- St. Lucie County's tipping fee is \$55/ton (tons delivered) plus \$8/ton processing fee
- Guarantee of 100 tons/day (put-or-pay, \$55/ton)
- Hauler is responsible for marketing and sales of all commodities
- St. Lucie County does not receive revenue from the sales of the commodities
- Minimal impact to St. Lucie County due to market fluctuations
- Hauler is averaging 135 tons/day
- Design capacity of facility is 120 tons/day





# Single Stream Facility Construction

- Construction cost = \$6.7M
- Housed in a 35,000 square foot building
- Equipment rated a 15 tons per hour (operating at 20 tons per hour)







# Single Stream Facility Construction

- Infeed system
- Optical sorter (PET and HDPE)
- OCC screens
- Manual sort stations
- Conveyors
- Magnets
- Bunkers
- Eddy current separator
- Baler



Began operation in October 2014



# Single Stream Facility Construction

- Engineer: CDM Smith – Vero Beach, FL
- Contractor: Paul Jacquin & Sons – Ft. Pierce, FL
- Equipment: Machinex, American Baler, Pellenc ST





# Single Stream Facility Construction





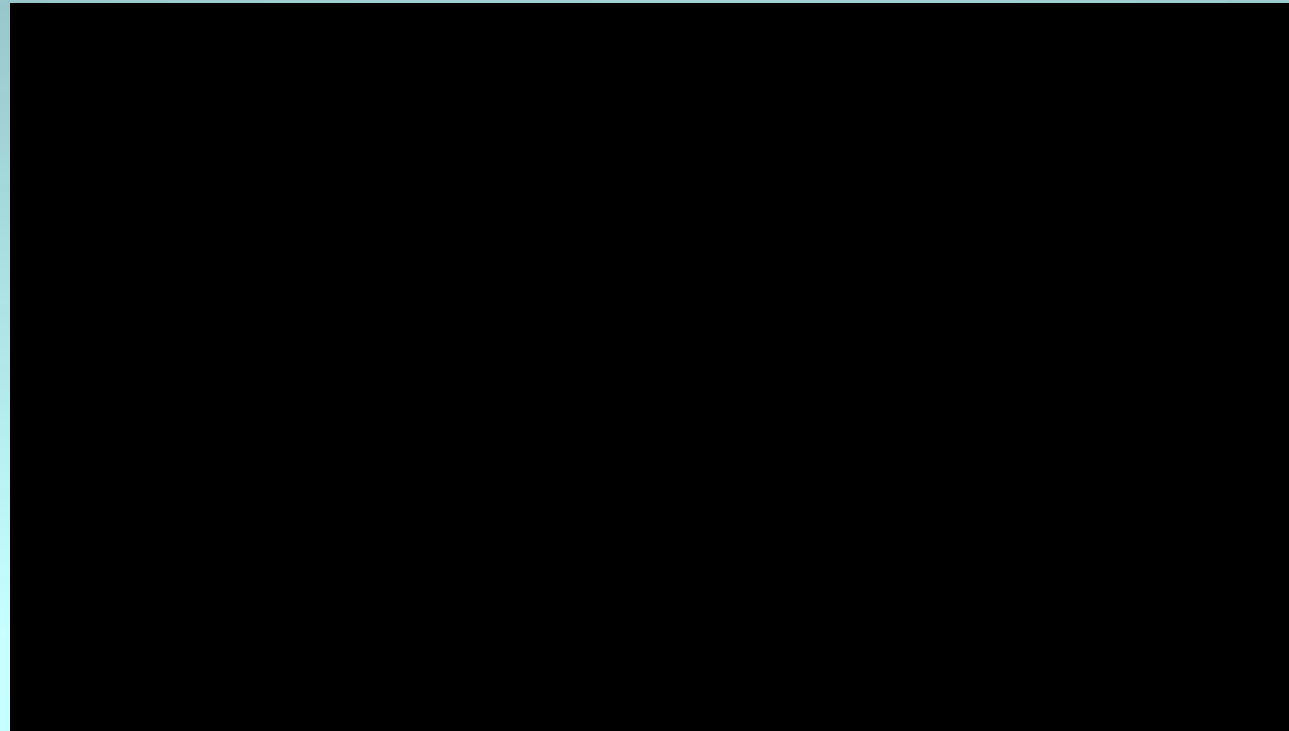
# Multimedia Marketing and Education Campaign

- Television – SLCTV and Comcast
- Radio – Top 8 stations in our market
- Digital format – Comcast.net, Treasure Coast Newspaper
- Print Media – local news outlet, brochure





# Multimedia Marketing and Education Campaign



Video



# Recycling Challenge

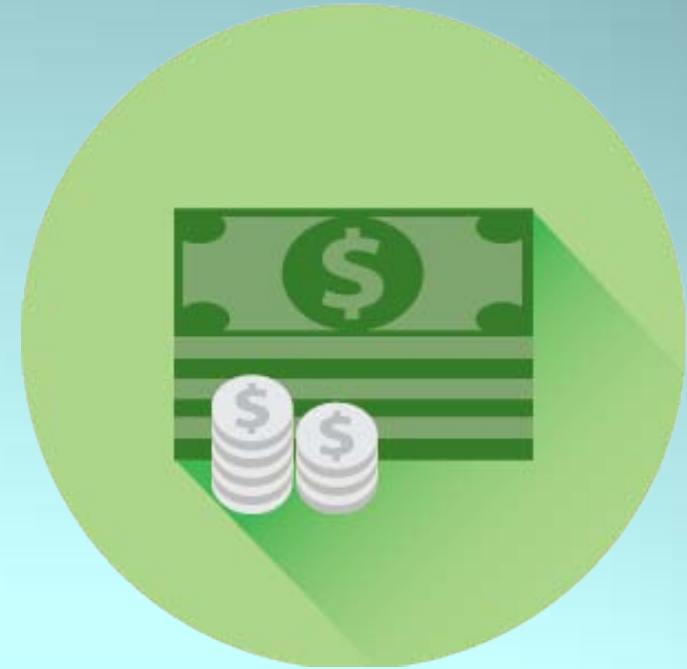
- Began May 1, 2014
- Funded by Waste Pro through promotional funds per our contract agreement
- Residents are chosen at random
- Staff looks for carts that are placed at the curb properly and then checks to make sure the proper material is in the cart
- Resident is awarded \$100
- Nearly \$90,000 awarded to residents in unincorporated St. Lucie County and the City of Port St. Lucie





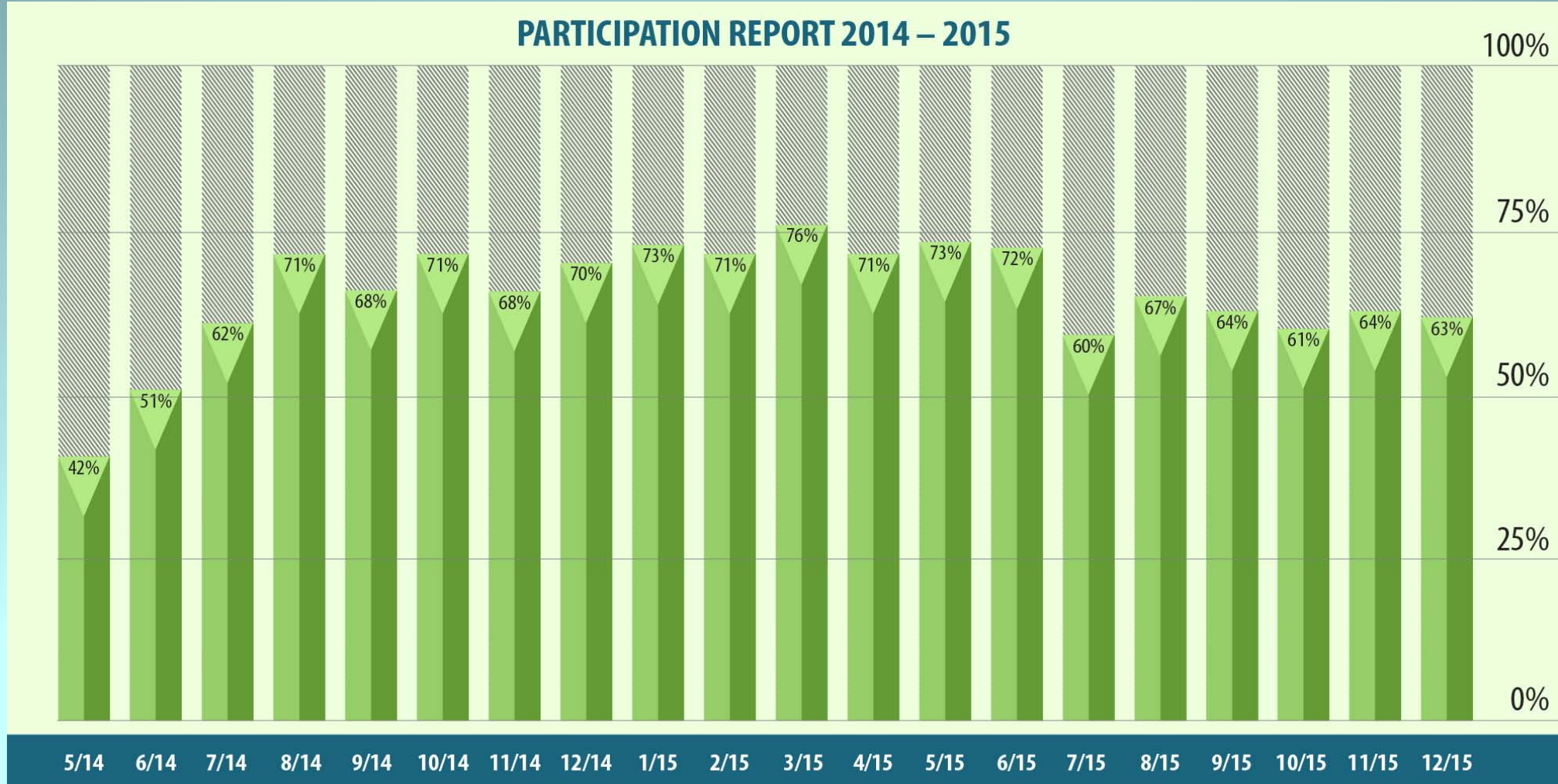
# Recycling Challenge goes to the Fair

- Monthly recycling challenge funds will be used at the fair
- Fair goers will be greeted at the gate and reminded that “It Pays to Recycle Right” at the fair
- Volunteers will reward patrons at the fair with \$10 bills
- The theme for school exhibits is Preserve the FUN...Recycle when done!





# Recycling Participation Rates



\*Data provided by Rehrig Pacific Company





# Results

- Single stream recycling facility is processing 20 tons/hour
- Generated 22 new St. Lucie County jobs with no additional cost
- 50% increase in recycling tonnages
- Increase in public awareness
- Ability to target contamination
- Increased participation rate
  - May 2014 participation rate was **42%**
  - May 2015 participation rate was **73%**
  - December 2015 participation rate was **63%**





# Glass Recycling

- System purchased from Andela Products for \$385,000
- Design capacity of 20 tons/hour
- Return on the investment if only used for daily cover = 9 years
- Tipping fee: \$4.50/ton
- Glass is being trucked from West Palm Beach by a South Florida hauler
- Produces a 3/8-inch minus and sand aggregate
- Currently in shake-down phase (contamination)





*Questions?*

