



A Collaborative Approach to Bear Wise Trash Management

Mike Orlando, Assistant Bear Program Coordinator

Florida Fish and Wildlife Conservation Commission

Florida's Conflict Wildlife- Bears



Abundant

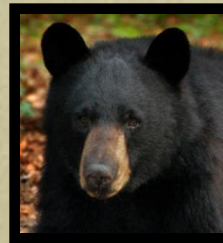
Little or no management



Sustainable coexistence



Over-exploited



Conflict management

Rare

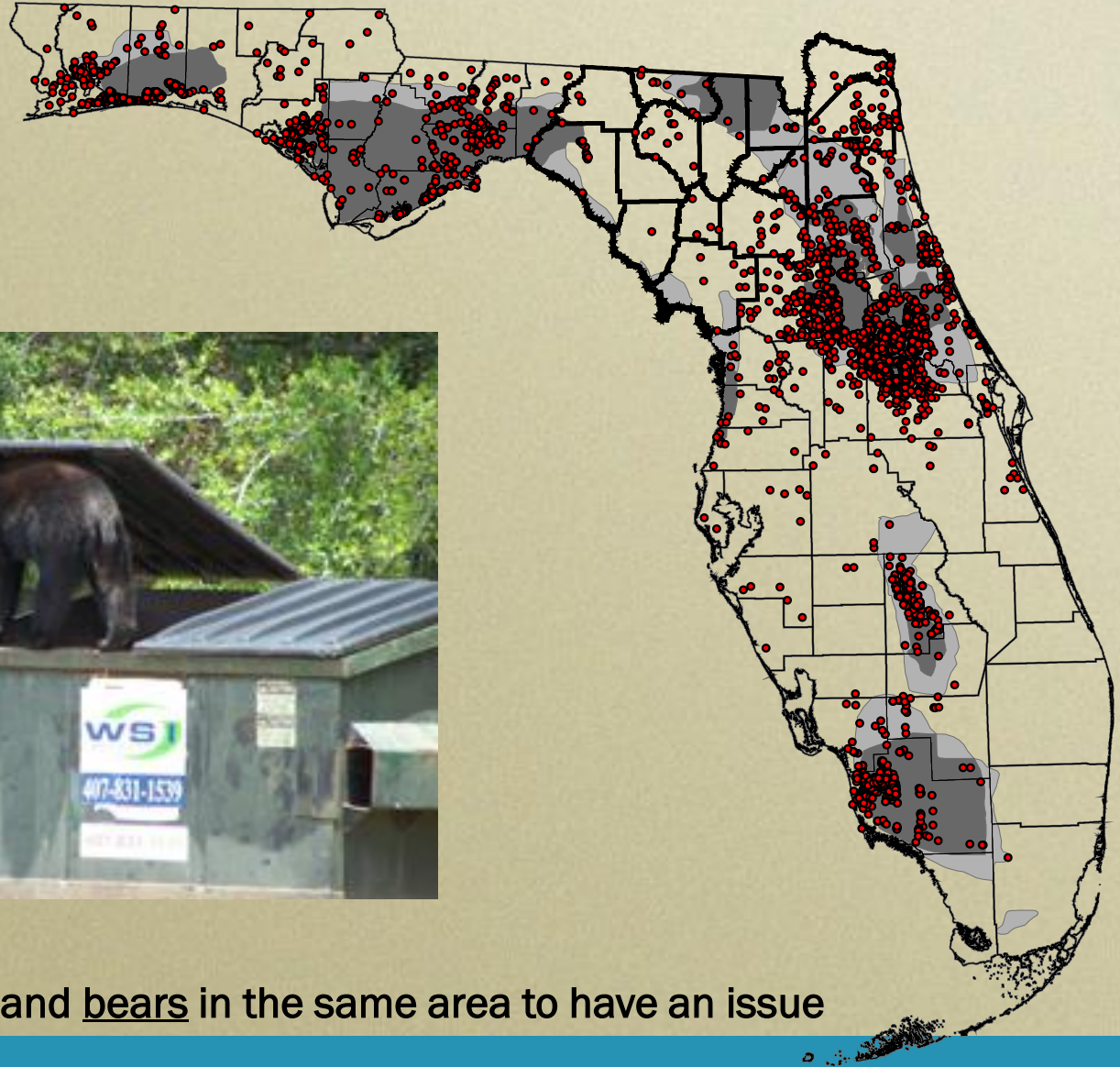
Recovery management

More numerous

Rebounding



Bear Conflicts



You need humans and bears in the same area to have an issue

Good bear

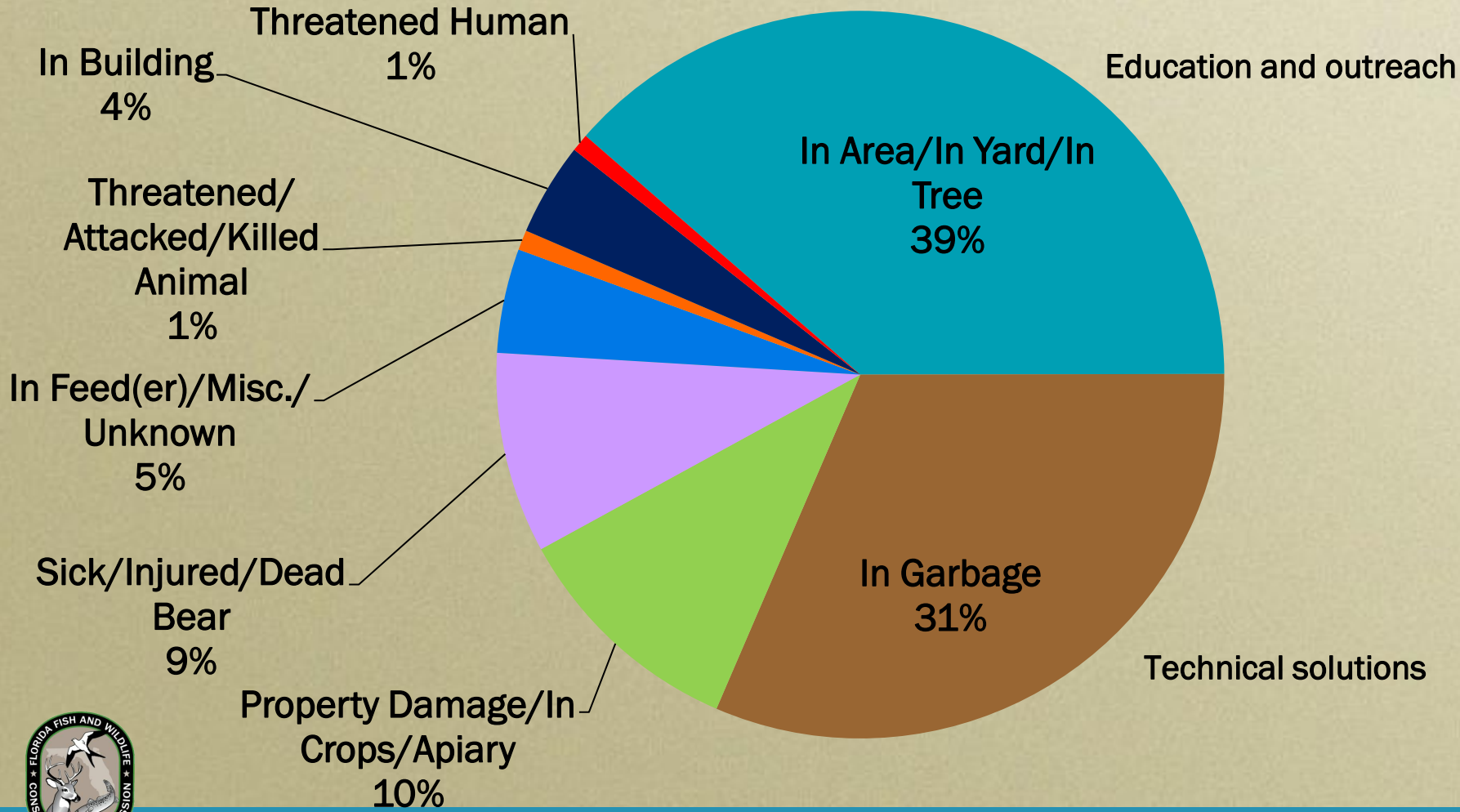


Bad cat



Human/Bear Conflicts 1990 - 2014

(n = 49,188)



Attractants



Garbage (Commercial)

- Switch out plastic doors with steel doors
- Clip on side



Garbage (Commercial)



Securing Attractants



Securing Attractants



Garbage is the number one cause of conflicts



Many Options to Secure Trash



Bear-Resistant Trashcan



Keep in garage/shed



Electric fence



Trashcan shed



Modified trashcan

Not just a Florida issue



Locale	State/Province	Type	Year	Households
Juneau	Alaska	City	1987	12,187
Sitka	Alaska	City	2008	3,545
Canmore	Alberta	Town	2001	5,176
Crowsnest Pass	Alberta	City	2007	2,586
Banff	Alberta	City	1999	2,565
British Columbia	British Columbia	Province	1999	1,885,785
Madera	California	County	1995	43,317
Placer	California	County	2001	132,627
Snowmass Village	Colorado	Town	1999	1,327
Pitkin	Colorado	County	2000	8,152
Steamboat Springs	Colorado	City	2001	5,201
Cordillera	Colorado	HOA	2002	602
Eagle	Colorado	County	2007	19,236
Vail	Colorado	City	2007	2,604
Hurlburt Air Field	Florida	Military	2010	3,473
Wingfield North	Florida	HOA	2014	115
West Yellowstone	Montana	Town	2000	617
Gatlinburg	Tennessee	City	1998	1,681
Teton	Wyoming	County	2008	175



The Good News is - It Works!

2014

SOUTHEASTERN NATURALIST

13(1):26–39

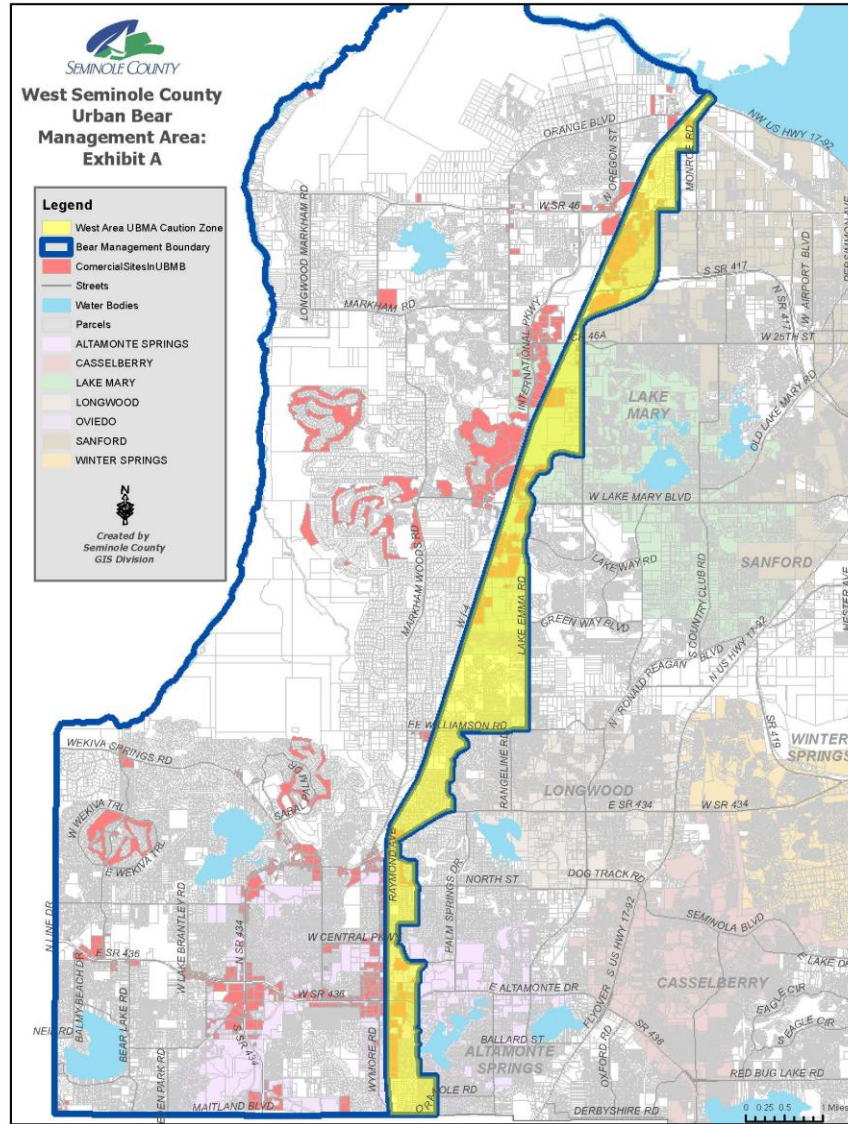
Testing Bear-Resistant Trash Cans in Residential Areas of Florida

	Bear Interactions Before	Bear Interactions After	Reduction
Modified Trashcans	71%	32%	55%
Bear-Resistant Trashcans	97%	5%	95%



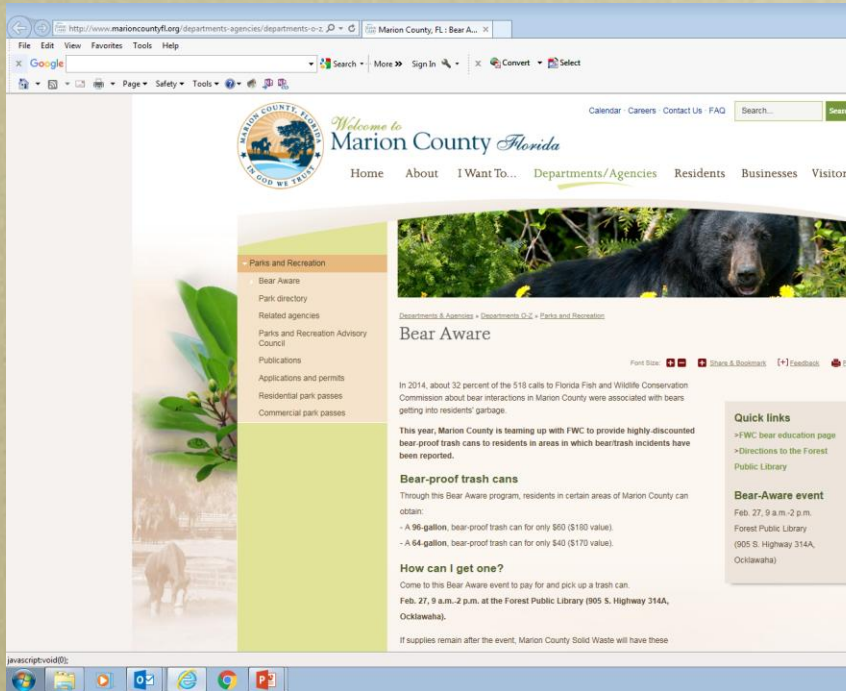
Seminole County Example

- Concentrated West of I-4
- Approx. 22,500 households
- Commercial dumpsters
- Challenge at scale
- 18 people have been scratched or bitten by bears in Florida (6 in Seminole County).



Working Together

- State
- Counties
- Cities
- Waste Management Companies
- Residents



The screenshot shows the Marion County Florida website. The header includes the county logo and navigation links: Home, About, I Want To..., Departments/Agencies, Residents, Businesses, and Visitors. A search bar is also present. The main content area features a large image of a bear and the heading "Bear Aware". Below this, there is a "Parks and Recreation" sidebar with links to "Bear Aware", "Park directory", "Related agencies", "Parks and Recreation Advisory Council", "Publications", "Applications and permits", "Residential park passes", and "Commercial park passes". The main text discusses the 2014 survey results and provides information about the Bear-Aware program, including a "Bear-proof trash cans" section and a "How can I get one?" section. A "Quick links" sidebar on the right lists: "FWC bear education page", "Directions to the Forest Public Library", "Bear-Aware event" (Feb. 27, 9 a.m.-2 p.m. at the Forest Public Library), and "Contact Us".



The screenshot shows the Seminole County Florida website. The header includes the county logo and navigation links: ABOUT US, EVENTS, NEWS, CONTACT US, and LANGUAGE. A search bar is also present. The main content area features a "CONTACT INFORMATION" section for the Solid Waste Management Division, including the address (1950 State Road 419, Longwood, FL 32750), phone number (407) 665-2260, fax number (407) 324-5731, and hours of operation. A "CONTACT US" button is located below this information. To the right, there is a "Urban Bear Management Area: Be Bear Aware" section, which includes a map of the county and text explaining the regulations for bear management. The text states that the regulations focus on the elimination of bear attractants within designated Urban Bear Management Areas and that residential refuse customers must secure their refuse until the designated collection day. A "CONTACT US" button is also located below the map.



Thank You

