



Hillsborough
County

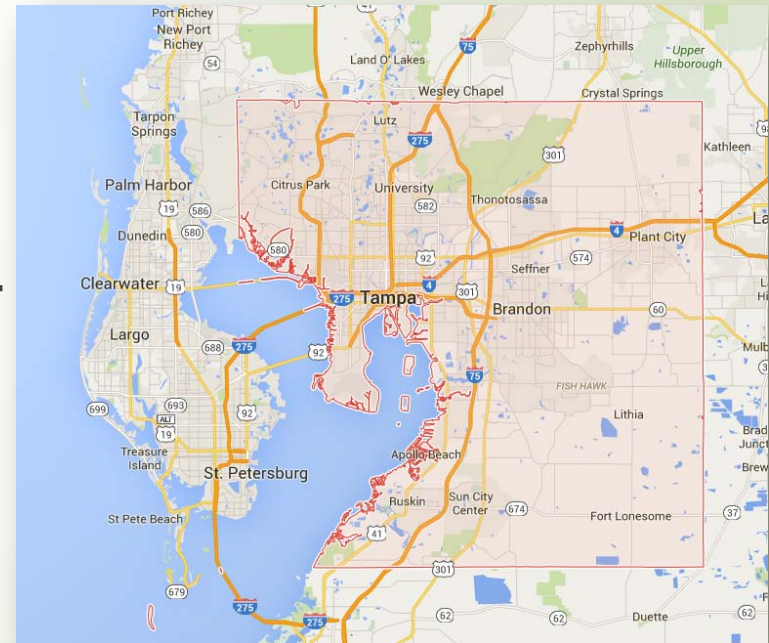
TALK TRASH



**Residential
COLLECTION**

Overview of Hillsborough County

- Fourth largest county in the fourth largest state
- Area: 1,266 mi²
- Population: 1.3 million+
- SF Homes: 260,000+
- 3 municipalities



Overview of Solid Waste System



Hillsborough County Solid Waste Management System

County owned facilities strategically located
throughout the county

- 1- Waste to Energy Facility, 1,800 tons per day
- 1- Class I Landfill Facility, 3,300 acres
- 2- Transfer Stations
- 3- Yard Waste Processing Facilities (Falkenburg, NW, SC)
- 3- Household Chemical Collection Facilities
- 4- Community Collection Centers



R 17 E R 18 E R 19 E R 20 E R 21 E R 22 E

T 27 S

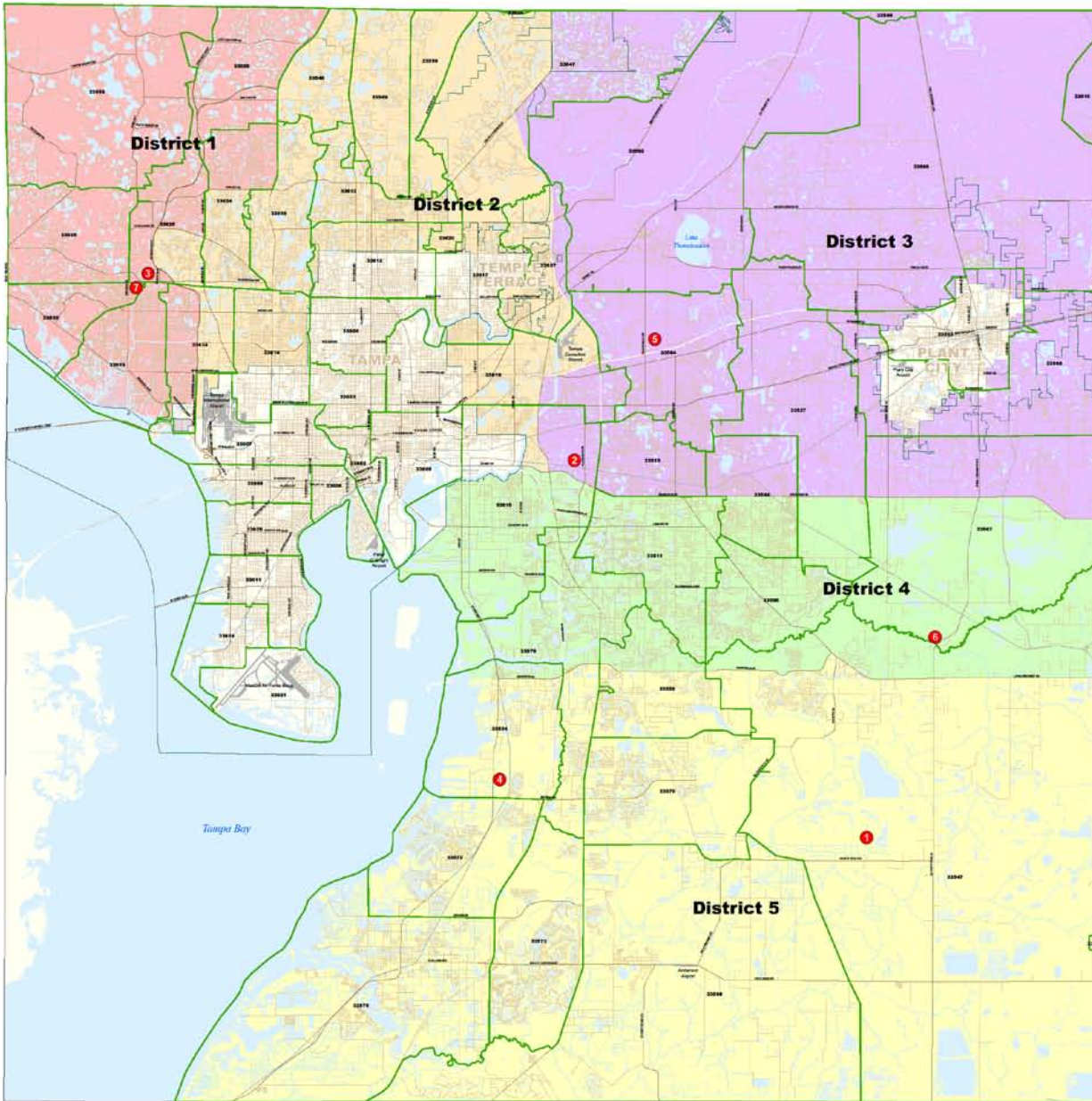
T 28 S

T 29 S

T 30 S

T 31 S

T 32 S



R 17 E R 18 E R 19 E R 20 E R 21 E R 22 E

SOLID WASTE DISTRICTS



Hillsborough County,
Florida

601 E Kennedy Blvd
Tampa, FL 33602
(813) 272-5810
printroom@hillsboroughcounty.org

Legend

Solid Waste Collection Areas

- Solid Waste District 1
- Solid Waste District 2
- Solid Waste District 3
- Solid Waste District 4
- Solid Waste District 5
- Zip Code Boundary

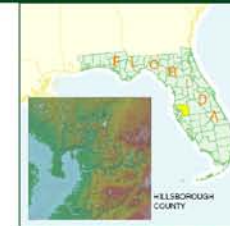
Facilities

- 1** **SOUTHEAST COUNTY FACILITY**
 - Class 1 Landfill
 - Tire Processing Facility
 - Leachate Treatment Plant
- 2** **FALKENBURG FACILITY**
 - Resource Recovery Facility
 - Yard Waste Processing Facility
- 3** **NORTHWEST COUNTY FACILITY**
 - Transfer Station
 - Community Collection Center
 - Yard Waste Processing Facility
 - Recycling Drop-off Facility
- 4** **SOUTH COUNTY FACILITY**
 - Transfer Station
 - Community Collection Center
 - Yard Waste Processing Facility
 - Recycling Drop-off Facility
- 5** **HILLSBOROUGH HEIGHTS TAYLOR ROAD FACILITY**
 - Community Collection Center
 - Household Chemical Collection Center
 - Recycling Drop-off Facility
- 6** **ALDERMAN FORD**
 - Community Collection Center
- 7** **SHELDON ROAD**
 - Household Chemical Collection Center



0 6,000 12,000 Feet

Locator Map



Solid Waste Districts
November 27, 2012

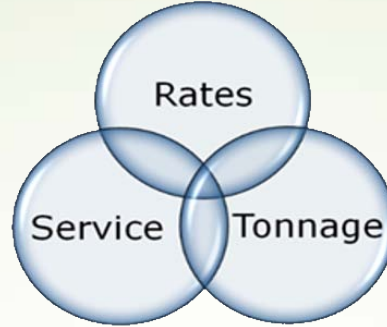
NOTE: Every reasonable effort has been made to assure the accuracy of this map. Hillsborough County does not assume any liability arising from use of this map. THIS MAP IS PROVIDED WITHOUT WARRANTY OF ANY KIND, either expressed or implied, including, but not limited to, the implied warranties of MERCHANTABILITY and FITNESS FOR A PARTICULAR PURPOSE.

SOURCE: This map has been prepared for the inventory of real property found within Hillsborough County and is compiled from recorded deeds, plats, and other public records. If not based on BEST AVAILABLE data.

Users of this map are hereby notified that the aforementioned public primary information sources should be consulted for verification of the information contained on this map.

Scale: 11.5" = 1" (1:1200)
Date: 11/27/12
File Name: Solid Waste Districts.mxd

Reason for Collection Transition



- Last competitive bid was 17 years ago
- Reduce residential and commercial rates
- Create revenue sharing opportunities from recyclables sales
- Improve oversight to protect financial well being of solid waste system
- Modernize existing residential collection
- Enhance recycling program

Procurement of Services

Three Concurrent Separate Bids

- Collection Contract
- Roll Cart Procurement
- Recycling Processing

Collection Contract Bid

- Divided area into five districts- 50,000 units per district
- Promoted competition-no bidder could win more than two districts
- Bid on Manual and Automated services
- Alternative Fuel Source
- Radio Frequency Identification (RFID)



Roll Cart Procurement Bid

Requirements

- Demonstrate ability to deliver carts within allotted time-500,000
- Cart deployment tracking system
- Cart size / graphic element (95, 65 and 35)
- Accuracy of cart delivery – within 200ft



Recycling Processing Bid

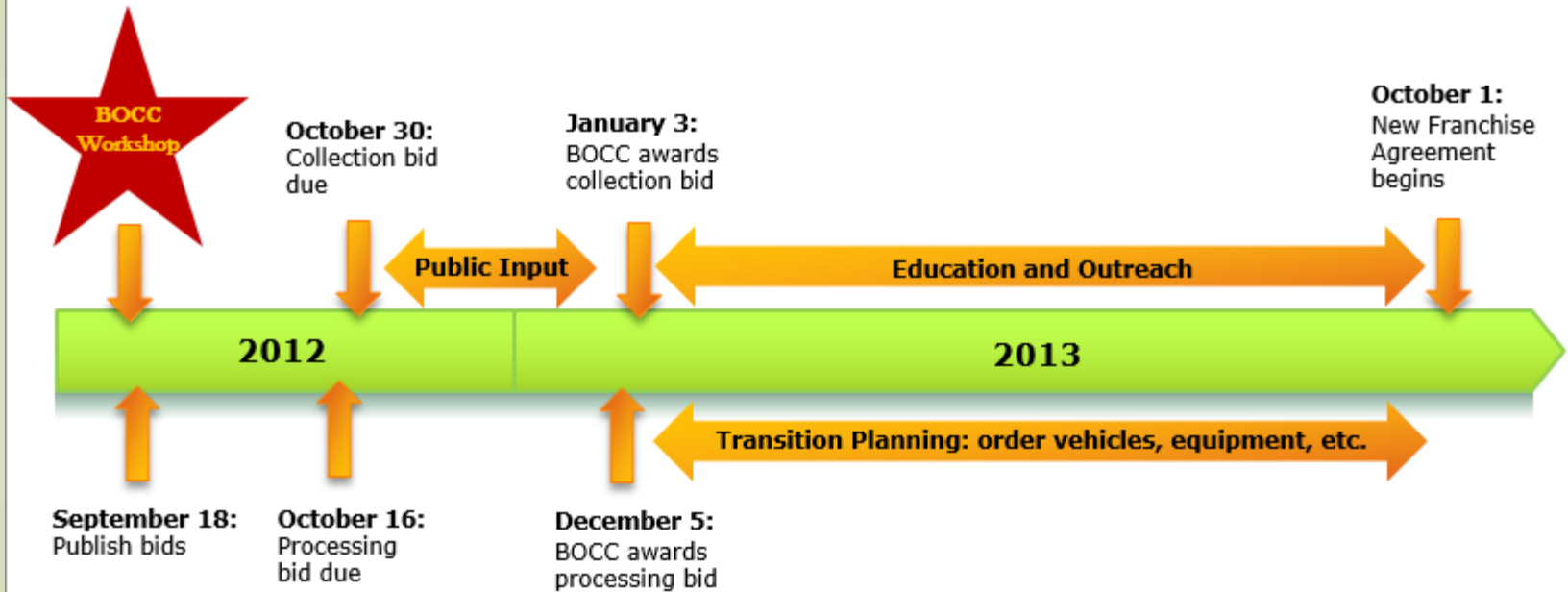
Requirements

- Single Stream capability
- Expanded list of recyclables
- Vehicle time management
- Competitive processing revenue



Implementation Timeline

Timeline



Contract Awards

Collection Contract

Awarded based on price, experience, and financial backing

- Automated collection- 3 haulers, 5 districts

Roll Cart Manufacturers

- 2 Cart Manufacturers selected

Recycling Processing

- Revenue Sharing based on composition



Change is Coming

Public Awareness Campaign

- Bus wraps
- Billboards
- Newspaper ads
- TV and Radio ads
- Direct delivery of literature
- Strategic signs placed throughout county



Community Outreach



Citizen Information Packets



Introducing A Better Way To Recycle



Beginning September 30, 2013, residents in Hillsborough County's Solid Waste service area will have an exciting new way of helping our community become cleaner and greener. Join us as we roll out improvements to the residential curbside collection program that will make recycling easier and more convenient than ever.

SINGLE-STREAM RECYCLING
No more sorting items into blue and green bins! Recyclables go into the "all in one" BLUE recycling roll cart. It's called single-stream recycling – all items are mixed together in one container and separated later at a recycling facility.

AUTOMATED CURBSIDE COLLECTION
No more bending and lifting recycling bins, or carrying them to the curb. Simply fill up the recycling cart, tilt it and roll it to the curb on your recycling collection day. An automated collection truck will do the rest of the work. An automated system keeps neighborhoods cleaner and neater on collection days, increases recycling rates and is safer for service providers.

MORE ITEMS CAN BE ACCEPTED
The improved program will accept more types of plastics and other materials.
See the reverse side of this card for recycling guidelines.



AUTOMATED COLLECTION STARTS THE WEEK OF SEPT. 30
Do not set out your roll carts until the new service begins.
Watch for announcements in late September for information on what to do with your old recycling bins and unwanted garbage cans.

Your garbage collection days will be
MONDAY & THURSDAY
Your recycling day will be
MONDAY
Your yard waste collection day will be
THURSDAY
Your service provider is Republic Services: 813-265-0292

NO. 01



FILL IT. TILT IT. That's How We Roll!
Automated Garbage And Recycling Collection

My Service Provider Is
Waste Management
813-621-3053

GRAY CART FOR GARBAGE
Household garbage, food waste, soiled paper, diapers, non-recyclable packaging.

BLUE CART FOR RECYCLING
Paper, cardboard, No. 1-7 plastics, aluminum cans and foil, steel and tin cans, milk and juice cartons, glass bottles and jars.

YARD WASTE
Bag, bundle or use your own containers for grass and landscape clippings, and tree limbs.

My Garbage Days Are: _____ _____	My Recycling Day Is: _____	My Yard Waste Day Is: _____
--	-------------------------------	--------------------------------

www.hillsboroughcounty.org/SolidWaste



New System- Public Introduction

Presentations to understand concerns of Citizens

- Public meetings- formal and informal
- HOA meetings
- Structure Group meetings
- Media coverage



Automated Services



Twice Weekly Garbage
(95-gallon standardized carts)



Once Weekly Recyclables
(65-gallon standardized
carts)



Once Weekly Yard Waste

Cart Size and Delivery Issues= Contract Modifications

- Seniors/Seasonal
- Disabled
- Townhouse/Condos
- Residential carts swaps



Roll Cart Assembly & Distribution



Lessons Learned

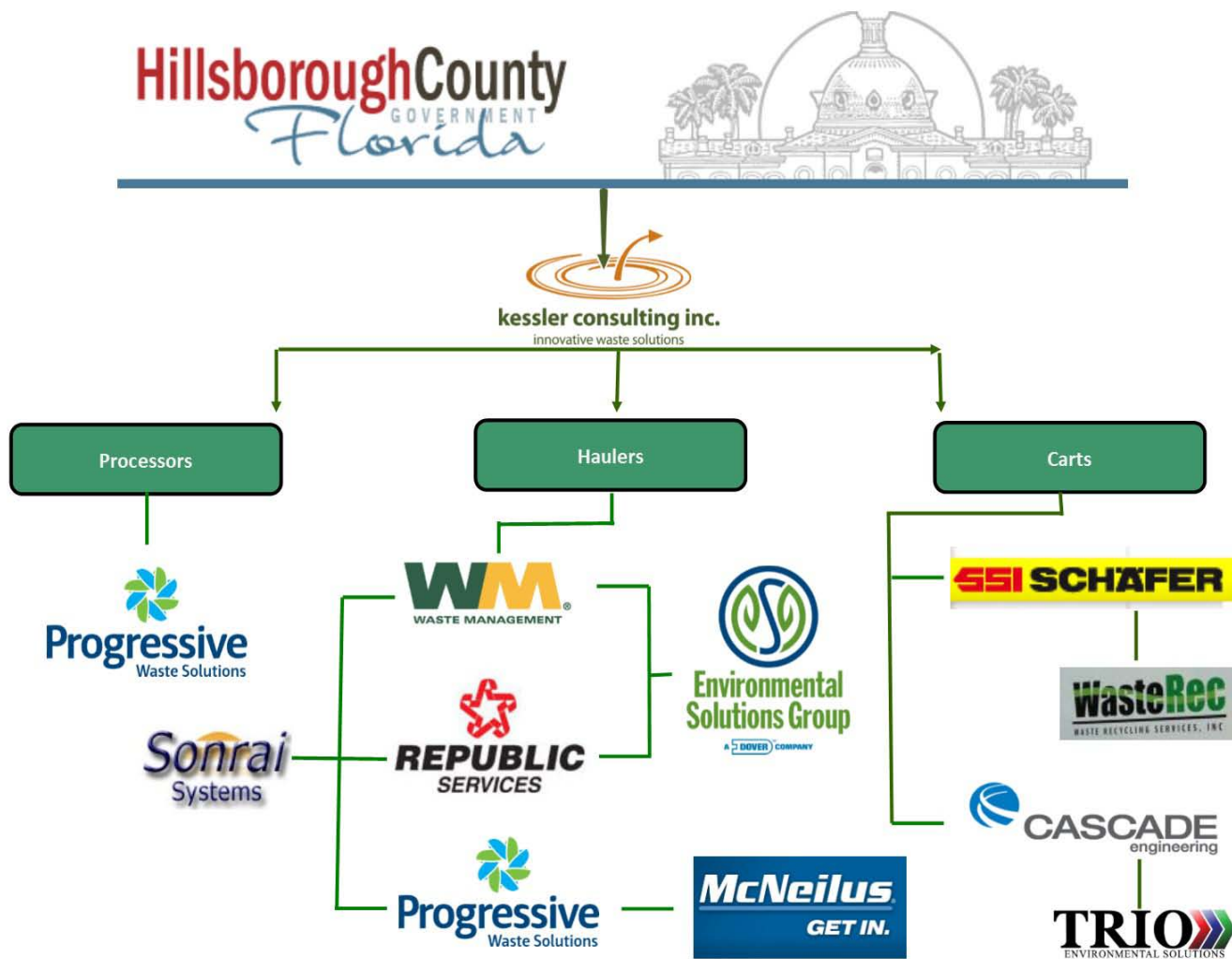
- Cart Procurement
 - Include variable cart sizes from beginning
 - Start with a good address data base
 - Cart swap mechanism
- Collections Procurement
 - Evaluate contract start dates-begin with Monday
 - Closer look at Holiday Schedules
 - Cart swaps
- Recycling Processing
 - Start with a composition

Recognized Benefits

- Employee accident and injury reduction
- Increased recycling participation
- Reduced rates
- Creation of higher paying sustainable jobs
- Cleaner air
- Flow control enforcement
- Recycling revenue sharing
- Happy Citizens



Public/Private Partnership



Fill It. Tilt It. That's How We Roll!

