

# Meeting Florida's Waste Diversion Goal – Lessons from States in Desperate Straits

Sarah A. Gustitus-Graham, Jill Gaffigan, Marc Rogoff | February 2022

Geosyntec<sup>®</sup>  
consultants



- Brief background
- Measurements of success
- Regulations vs Incentives
- Increasing Options
- Education
- Equity
- Open discussion



# slido



**Join at [slido.com](https://slido.com)  
#458481**

ⓘ Start presenting to display the joining instructions on this slide.

# slido



**On a scale of 1-5 (5 = extremely easy, accessible and understood;  
1  
= near impossible) how would you rate recycling in the city or  
county where you live and/or work?**

ⓘ Start presenting to display the poll results on this slide.

2008 – Florida sets 75% diversion by 2020 goal



Circa 2014  
Bright eyed,  
bushy tailed,  
and super  
optimistic

2020 – Florida at  
50% diversion

More school...  
Some work...  
Some very  
anti-recycling  
roommates...  
National  
Sword...  
Pandemic...

A little less  
optimism, but  
still excited  
to work on  
solutions!

Today

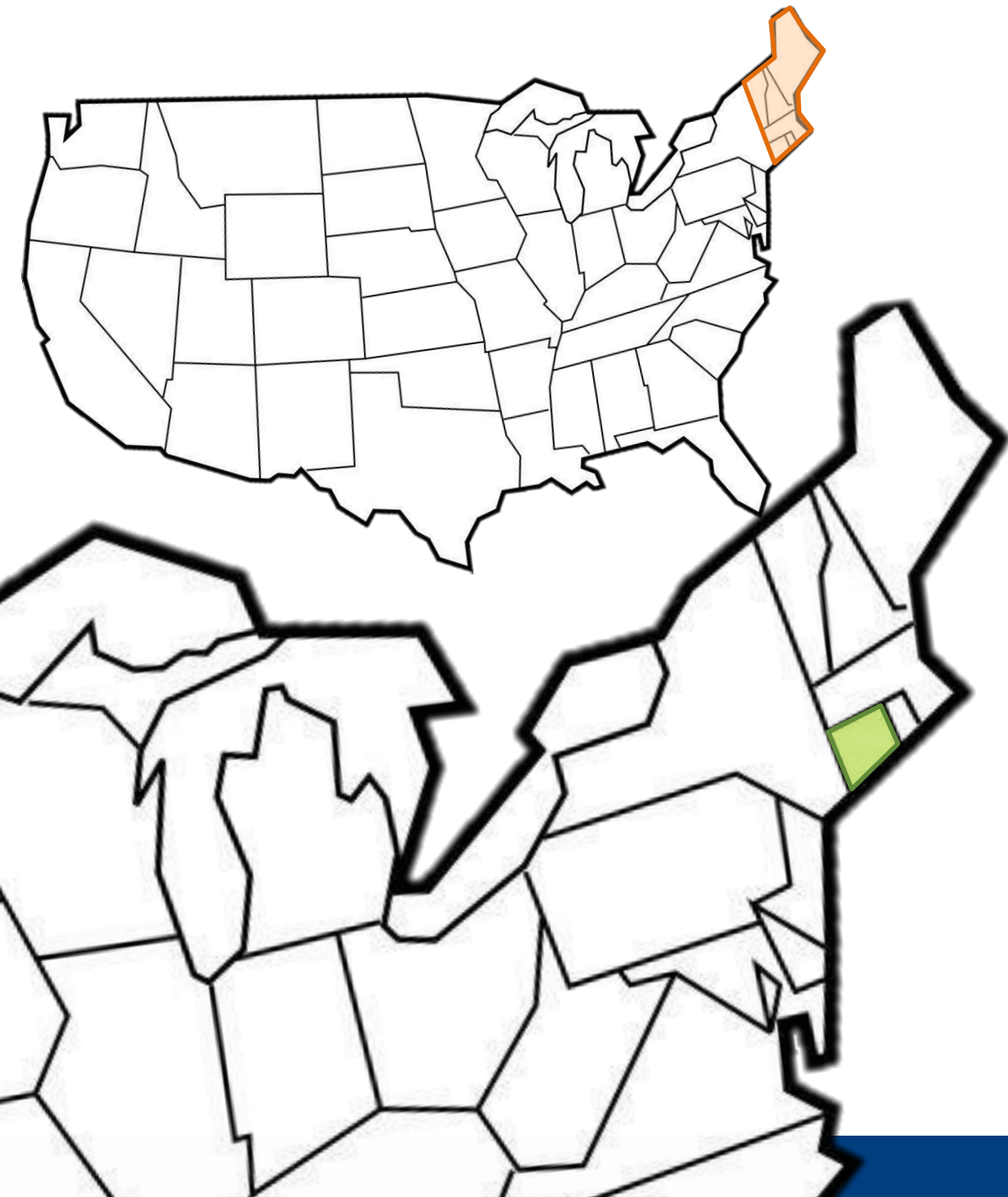


“Necessity is the mother of invention.”

-Proverb







# Connecticut

- No remaining MSW landfill capacity
- Heavily relies on WTE

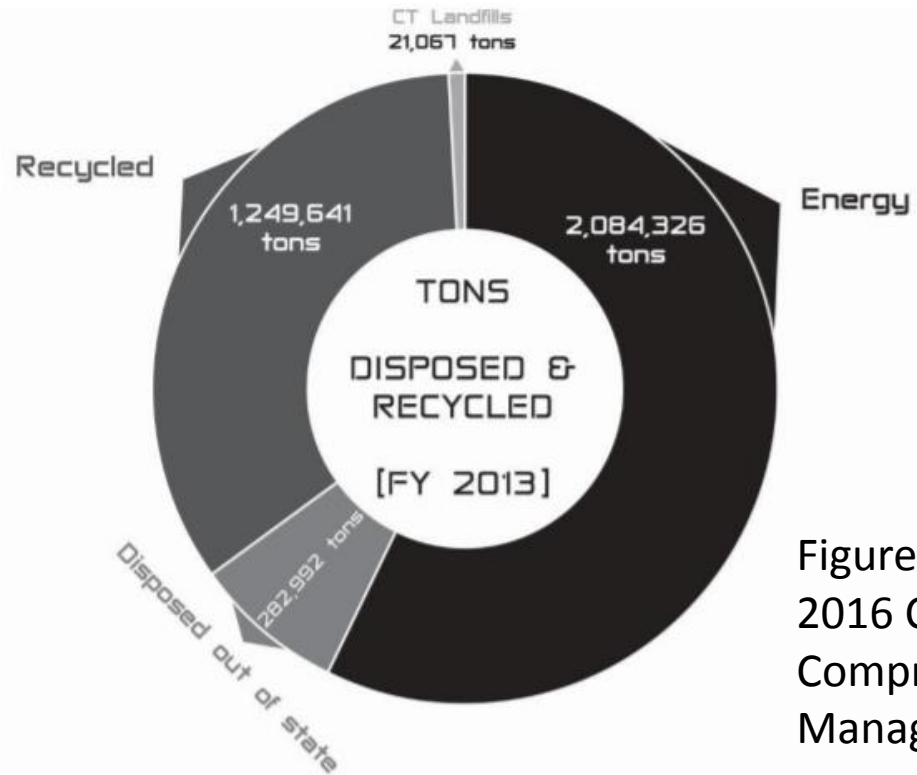
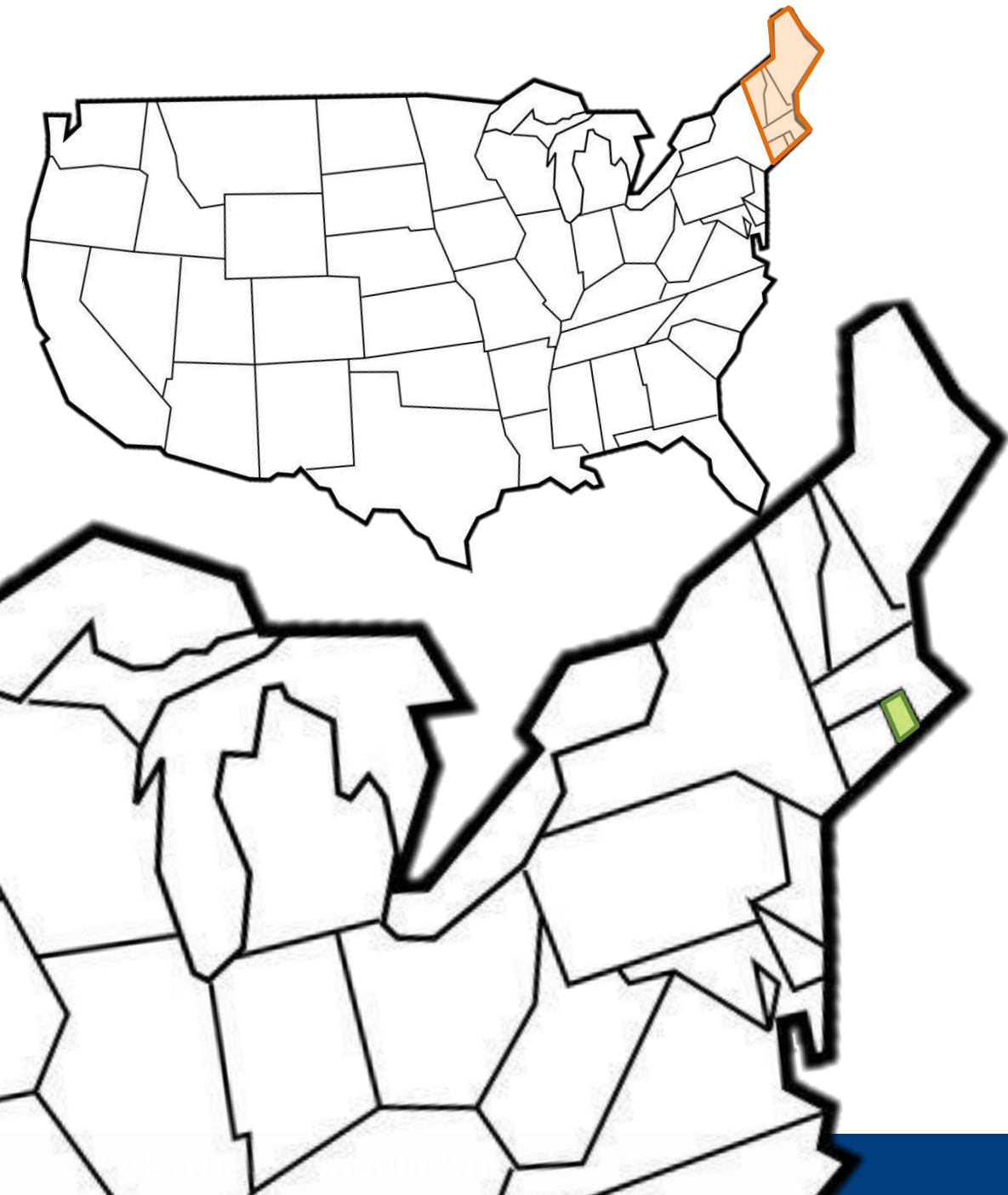


Figure source: (2013 data)  
2016 Connecticut  
Comprehensive Materials  
Management Strategy





# Rhode Island

- Primarily relies on RI Resource Recovery Corp to run state's major landfill, recycling and composting programs



# Massachusetts

- Most expensive state to landfill waste (\$122.63/ton)

Figure 2-1 Projected In-State MSW Landfill Capacity

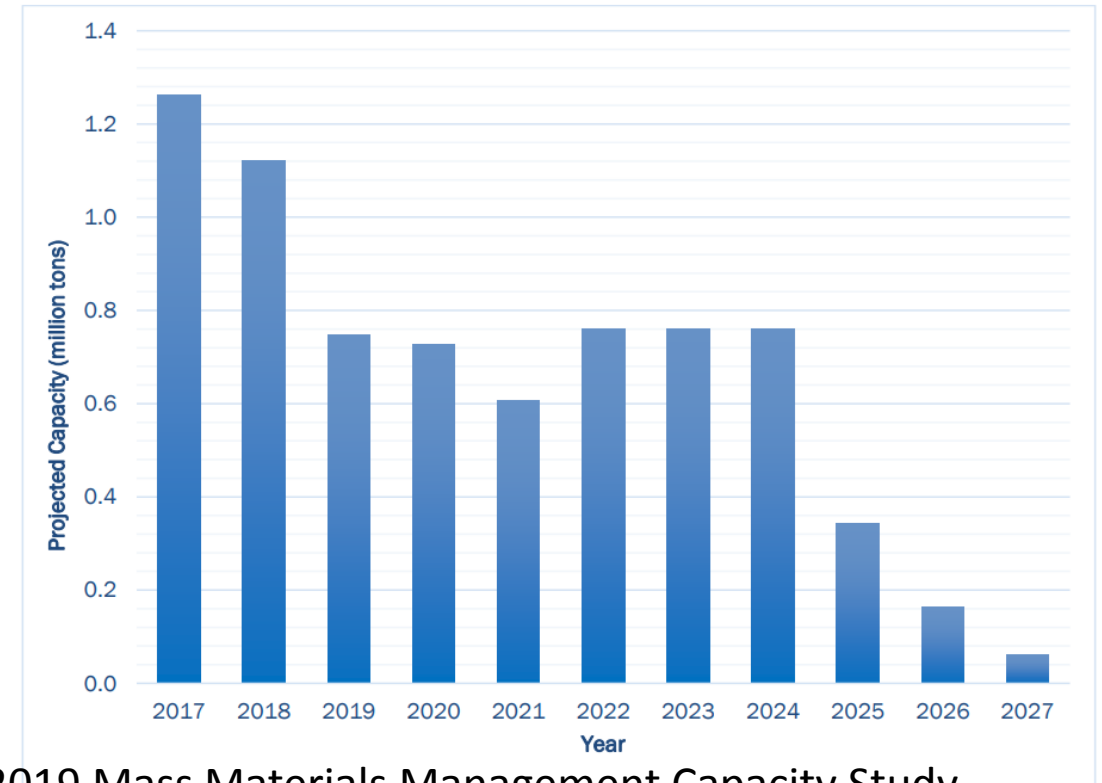


Figure source: 2019 Mass Materials Management Capacity Study  
<https://www.mass.gov/files/documents/2019/02/19/capstudy.pdf>





# Vermont

- One major active landfill
- Implemented Act 148 which “jettisoned the concept of waste itself”
- Third most expensive state to landfill waste (\$116.46)

# New Hampshire

Figure 2. Projected Waste Disposal Need & Capacity for New Hampshire (2020 - 2040)

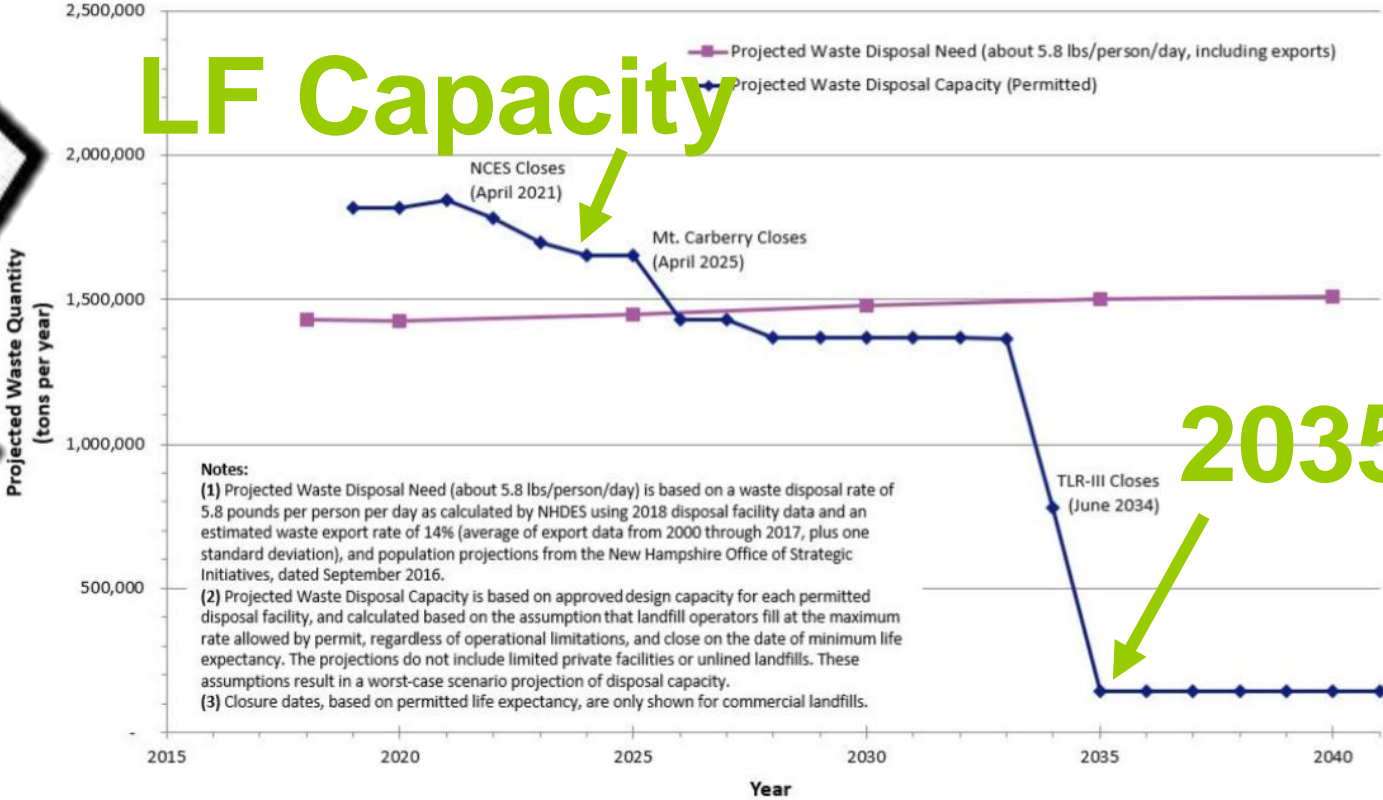


Figure source: New Hampshire 2019 Biennial Solid Waste Report





# Maine

- Combination of landfills and WTE
- Recently passed a packaging EPR law



# Measuring success in Florida

“Florida’s [pre-2008] recycling rate, which was calculated based on recycling traditional materials, was 30%. If that same methodology was applied to 2020, the recycling rate would be 25%.”

Source: Florida and the 2020 75% Recycling Goal Final Report



# Massachusetts goals

By 2030: Reduce annual disposal by 1.7 million tons (30% reduction)

By 2050: Reduce annual disposal by 5.1 million tons (90% reduction)





# Carrots and Sticks of Recycling

## Sticks:

Disposal  
bans  
Fines  
EPR



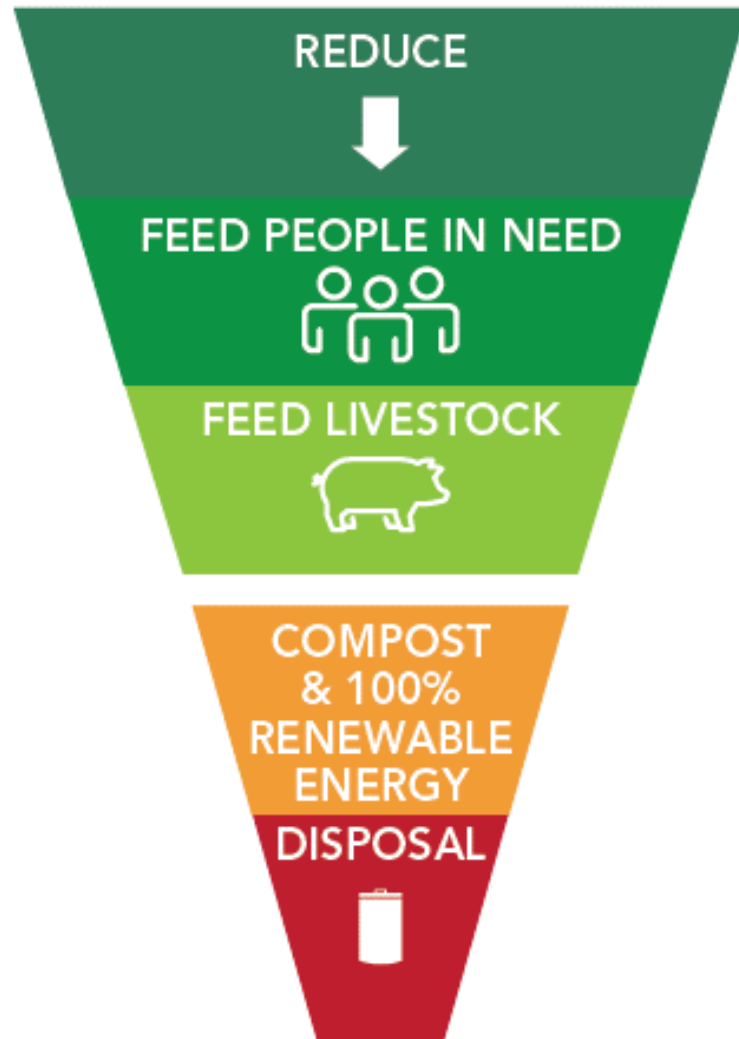
## Carrots:

PAYT  
Grants  
Home  
composting  
support



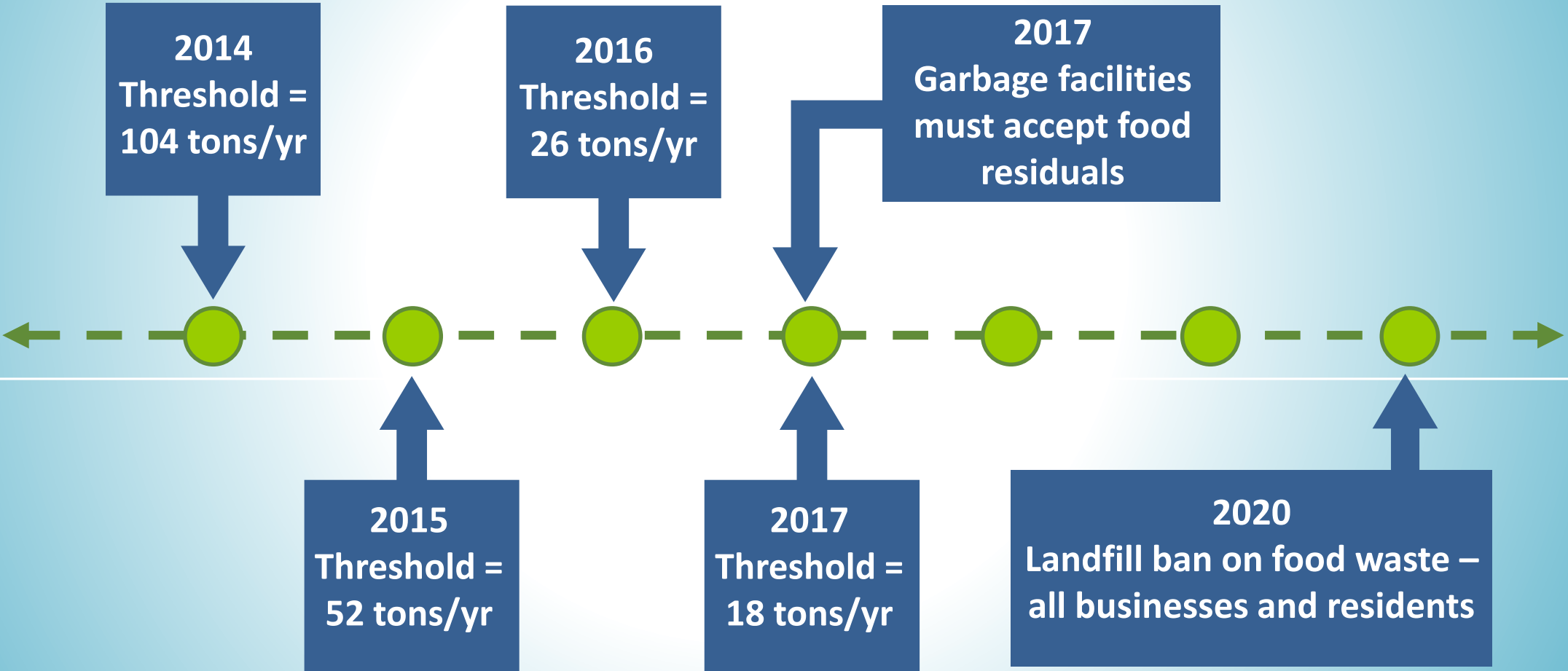
# Case Study – Commercial Food Waste Bans

## WASTED FOOD HIERARCHY

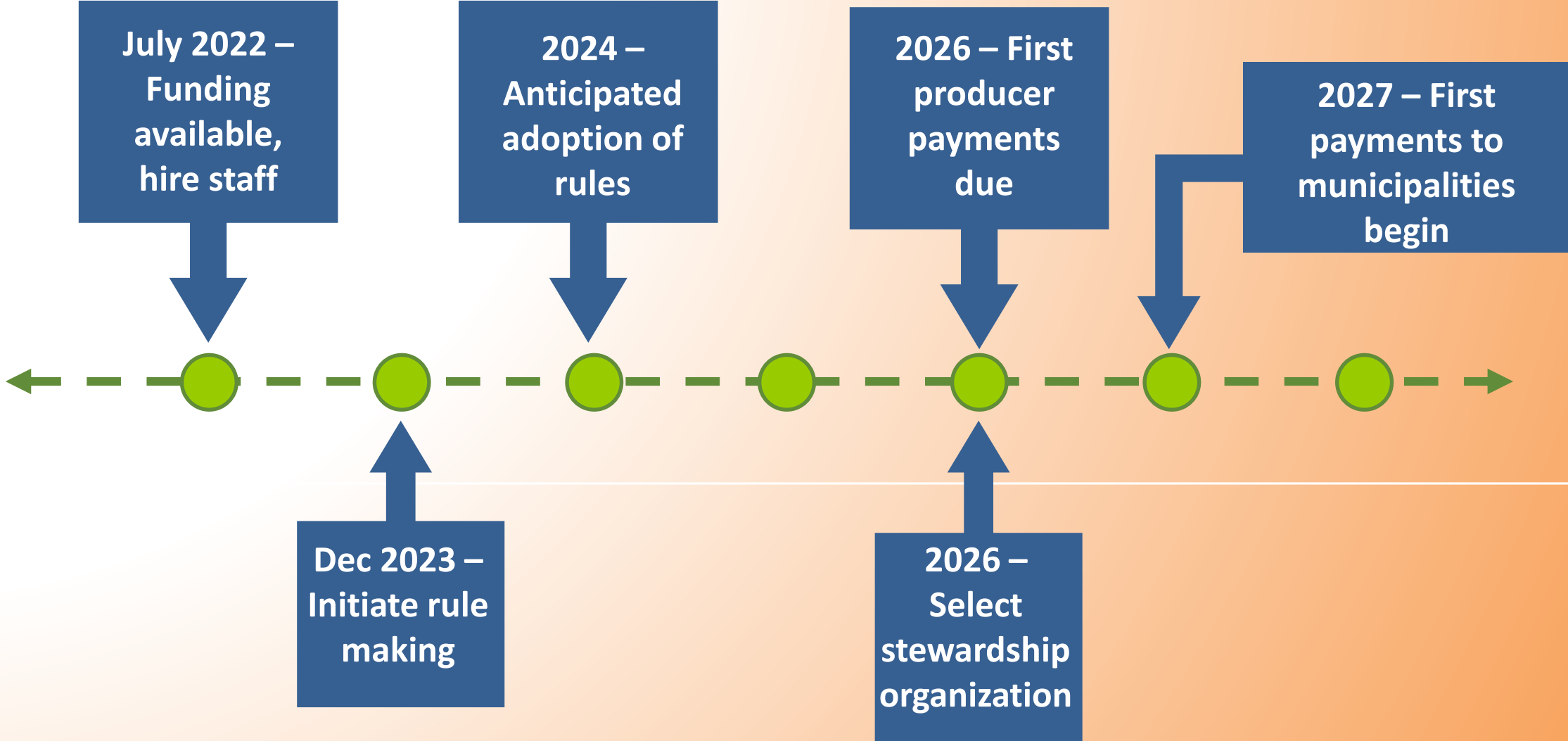


# Vermont Act 148

2014-2019: Mandatory composting/donation of food for generators above threshold, if composting facility is within 20 miles



# Maine EPR Law





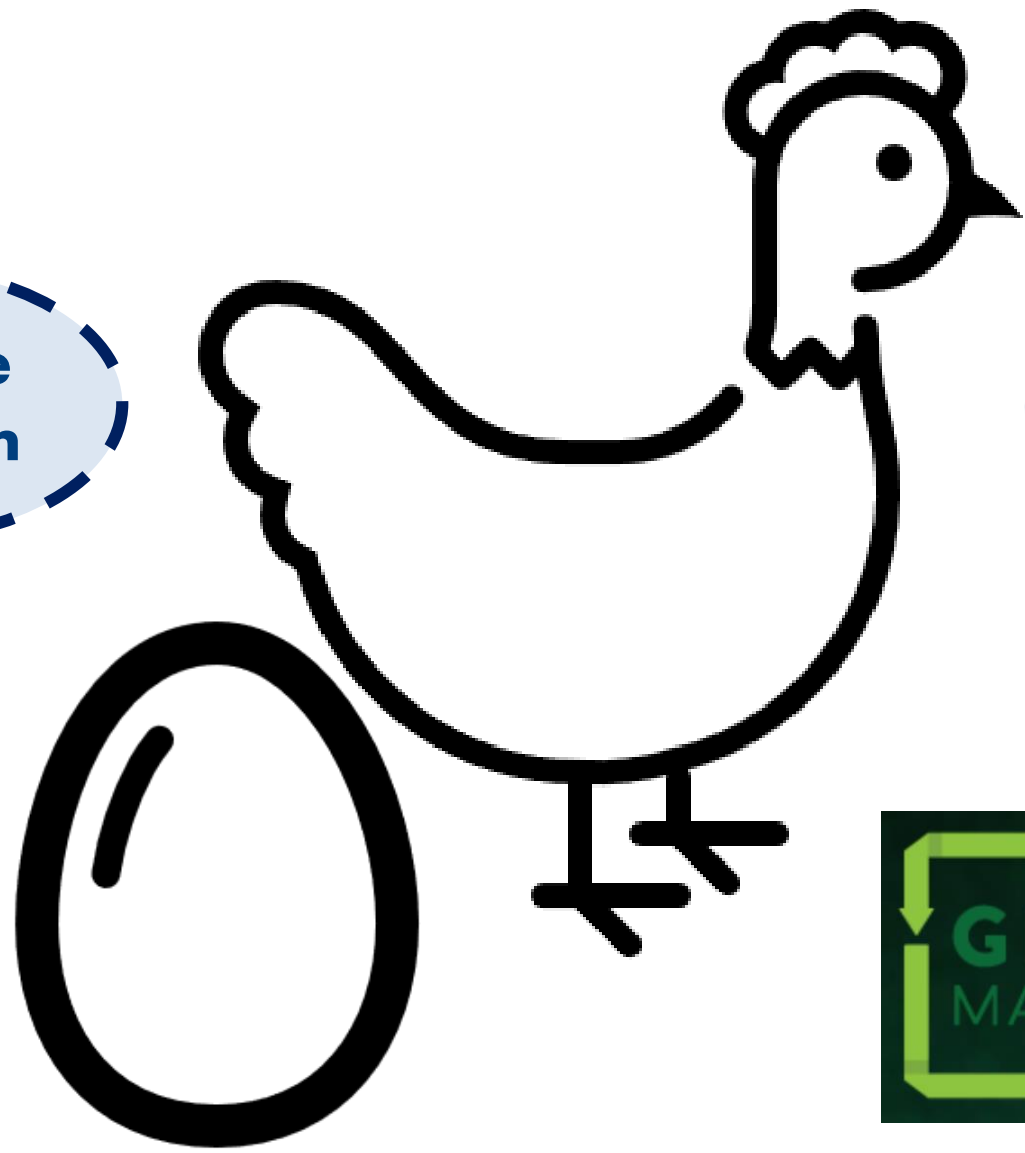
# Increasing Options and What Comes First?

Materials collected

Curbside collection

Collection at facilities

Alternative drop-offs



**FEEDBACK**





# Case Study - Vermont

**UNIVERSAL RECYCLING**  
**Materials Management Map**

**VERMONT**  
AGENCY OF NATURAL RESOURCES

**Welcome to the Universal Recycling Materials Management Map.**

This map was developed to connect residents, businesses, and institutions with solid waste services; and to connect haulers, composters, and food rescue agencies to sources of food and food scraps. The goal is to make it easier to reduce waste and save natural resources.

Here you will find facilities that accept various materials for food rescue, recycling, composting, and disposal, such as food shelves, transfer stations and composters. As you zoom in closer, you will find businesses and institutions (such as restaurants, grocery stores, markets, hospitals, schools, food manufacturers, assisted living facilities, correctional facilities, and more) with the estimated tons of food scraps they might generate. Zooming in will also reveal local food shelves where quality food can be donated for people in need. You can map and find your local solid waste management entity by clicking on the box in the map layers section.

For an overview of the map tools and functions, click the **Map Guide** button below or [view a 7-minute User Tutorial Video](#).

VTANRGIS, Vermont Agency of Natural Resources | Esri, HERE, Garmin...



MARK ANDERSON

WWW.ANDERSTOONS.COM



"You know, you'd get a lot more exposure on Instagram or Pinterest."

# Case Study – Recyclopedias

## Recyclopedias






ecomaine > What Can Be Recycled? > ecomaine's Recyclopedias

### ECOMAINE'S RECYCLOPEDIA

Which bin should I put this in? The ecomaine Recyclopedias puts all the waste disposal answers you need in your pocket, along with quick contact information and a fun, fact-based game.



ecomaine RECYCLOPEDIA Share ▾


 ecomaine RECYCLOPEDIA     Wicked Smaht Recycler     Educational Outreach     Keep in touch     Need help?

Type the name of a waste item and we'll tell you how to recycle or dispose of it.


 Search

---


POPULAR SEARCHES




Styrofoam



Mattresses



Berry containers



Almond milk cartons



## Populations that recycle well need to:

**Have access to  
recycling  
options**

**Be educated  
on how to  
recycle well**

**Be engaged  
and motivated  
about recycling**

# Case Study – New Bedford, MA Multilingual Recycling Videos



## Recycle Only These Items

## Recicle Solo Estos Artículos



**Latas de Comida y Bebida**  
vacie y enjuague



**Botellas, Jarras, y Contenedores de Plástico**  
vacie, enjuague y reemplaze la tapa



**Botellas y Jarras de Vidrio**  
vacie y enjuague



**Periódico, Revistas, Correo No Deseado, y Cajas**  
vacie y aplanar

**Fines** may be issued for recycling carts containing anything other than the above items.  
**Multas** se pueden emitir para carros de reciclaje que contengan artículos no mencionados en esta lista.



City of New Bedford  
Department of Facilities  
and Fleet Management

**Questions? Call (508) 961-3008**

**NewBedfordRecycling.org**



NewBedfordRecycling



NewBedfordRecycling

- [Videos - Facilities & Fleet Management - City of New Bedford Official Website \(newbedford-ma.gov\)](#)



# slido



**Imagine where you live/work in 10 years. What would you like to see change in the current diversion program/infrastructure the most?**

ⓘ Start presenting to display the poll results on this slide.

slido



**Where do we need to put the most effort in the coming years?**

ⓘ Start presenting to display the poll results on this slide.