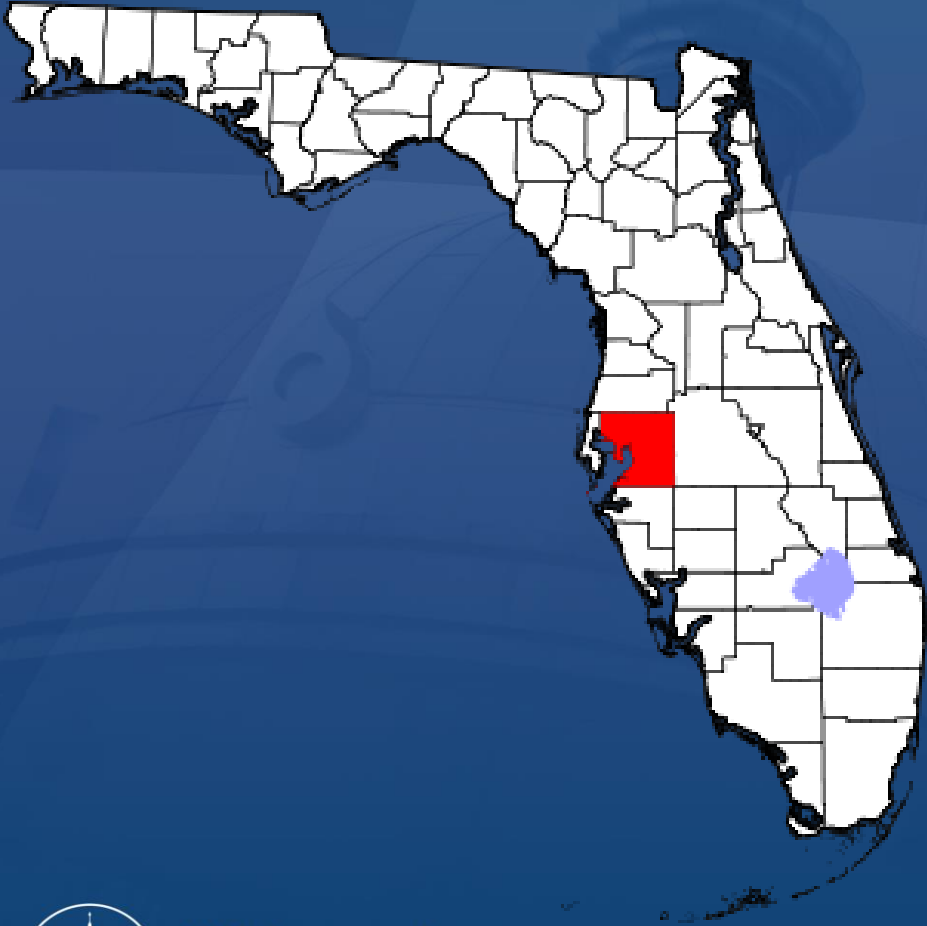


# Disaster Debris Management Response to Hurricane Ian

**SWANA FL 2023 Winter Conference**

**Travis S. Barnes, MPA, LEED AP  
Manager of Sustainable Materials Management  
Hillsborough County**

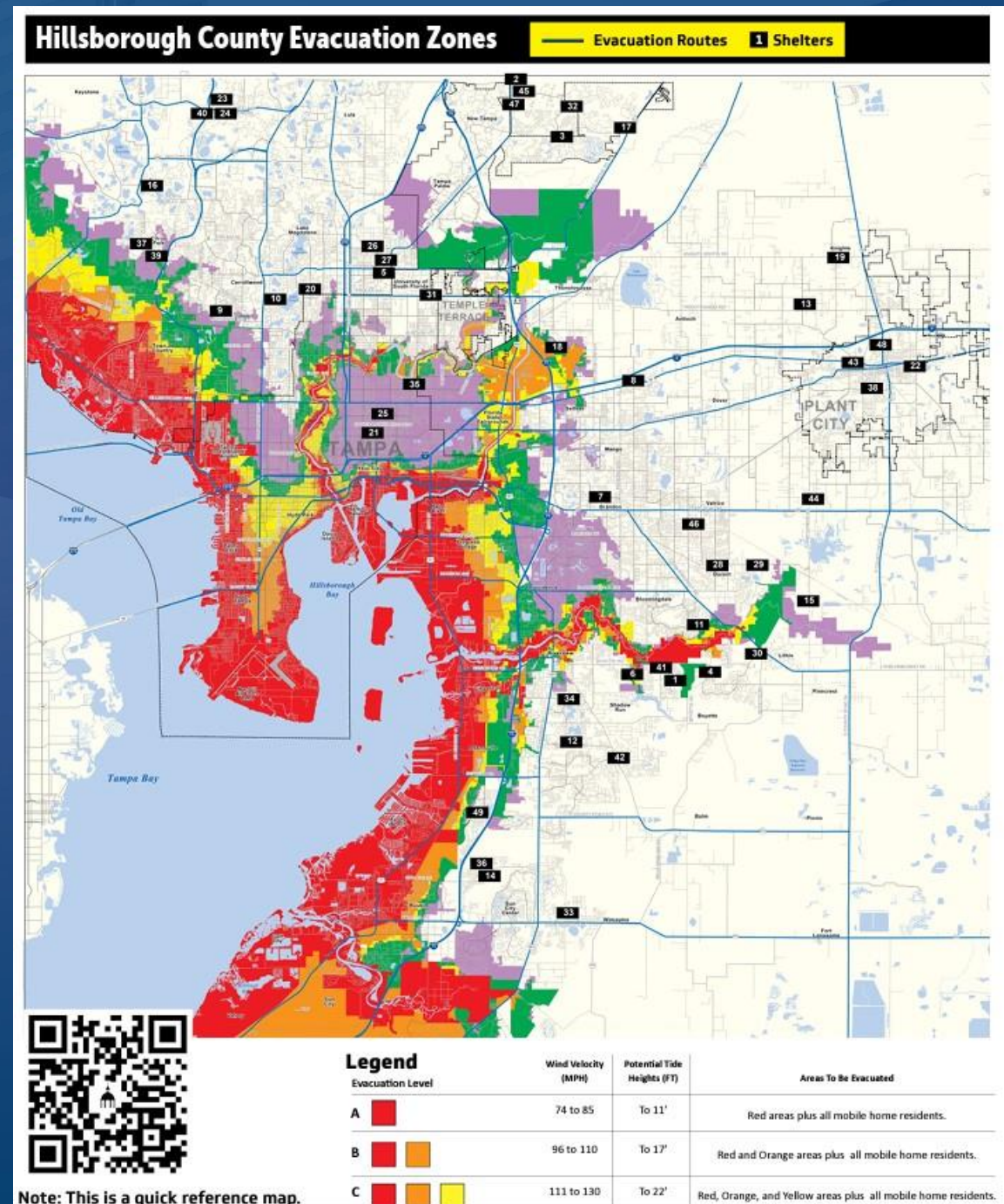
# Overview of Hillsborough County



- 4<sup>th</sup> most populous county in FL at 1.48 million
- Rapid population growth with 19.7% increase from 2010 to 2019 and pace accelerating
- Diverse mix of urban, suburban, and rural communities with unincorporated area comprising 84% of the County
- 1,020 square miles of land, 246 square miles of inland water, 165 miles of waterways
- Maintain nearly 3,000 miles of centerline road, 18,000 intersections, 1,900 miles of roadside ditches, 225 miles of drainage canals, 4,500 miles of roadside shoulders, 246 bridges, etc.

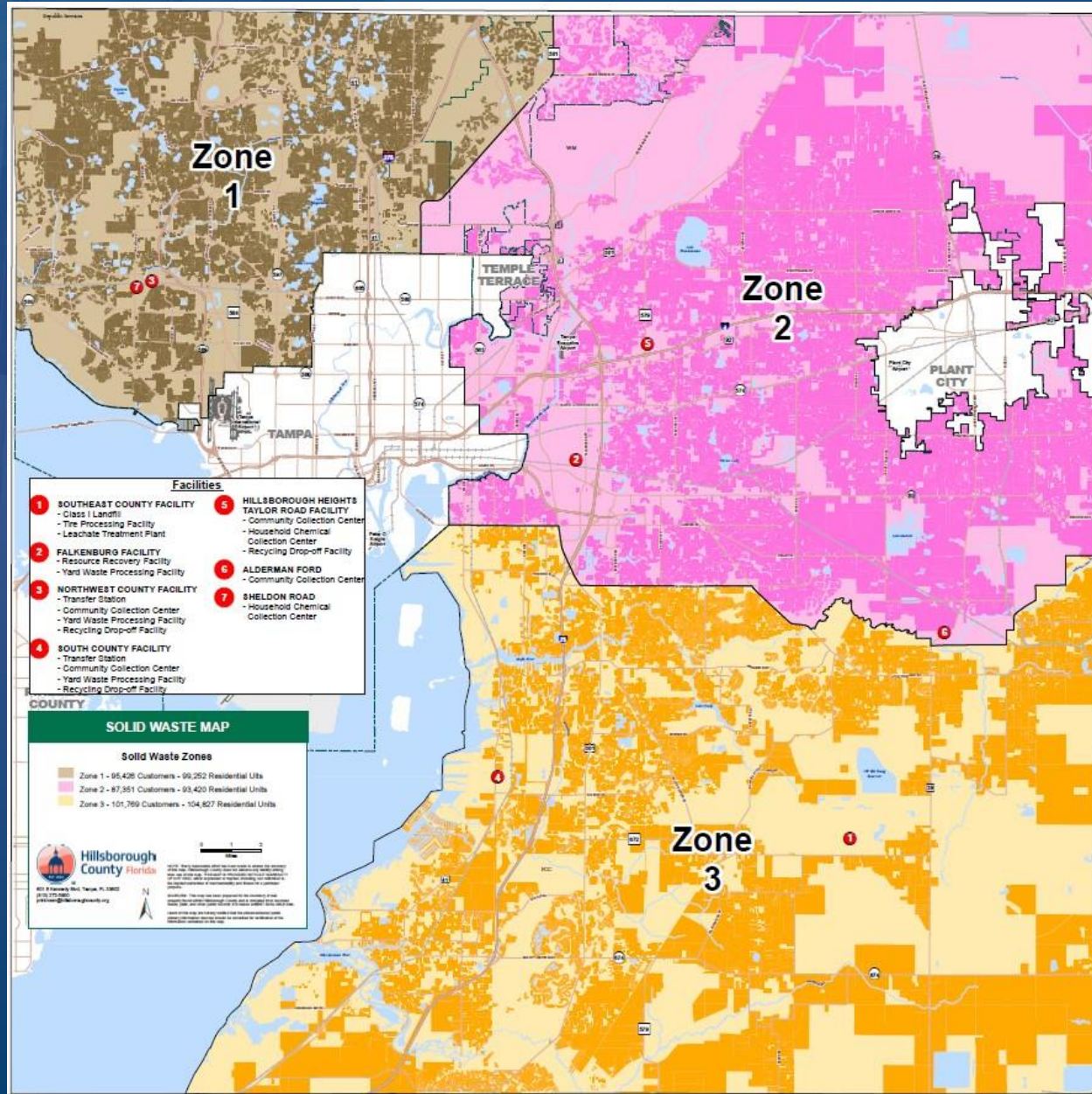
# Susceptibility to Storm Surge

- Evacuation maps updated in 2022
- Nearly 75,000 residents in an evacuation zone for the first time
- Used the latest Sea, Lake, and Overland Surges from Hurricanes (SLOSH) model from National Hurricane Center
- Most of downtown Tampa, MacDill Air Force Base, Port Tampa Bay, and densely populated areas highly susceptible



# Debris Removal Operations

- Two disaster debris contractors:
  - Phillips & Jordan (west, zone 1)
  - Ashbritt (east, zone 2 & 3)
- Debris monitoring by Thompson Consulting Services
- Utilized residential yard waste routes for debris collection
- 7 pre-approved Temporary Debris Management Sites, activated 6
- Opened 3 residential drop sites
- Only vegetative debris



# Impacts

- Fortunately there was very minimal flooding
- Power outages at key facilities: landfill, transfer stations, etc.
- Primarily impacted the eastern and southern areas of the County with downed trees
- Initial debris volume estimated at 500,000 cubic yards or more
- Nearly 670,000 cubic yards collected in total



# Challenges & Lessons Learned

- Constant and evolving communications to staff, the public, Commissioners, and the media
  - Webpage updates, press releases, signage, etc.
  - Managing expectations
  - How to properly place debris on the ROW
  - Locations and hours of drop off sites
  - Increased demand on call center and customer service teams
  - Collaboration with internal departments and resources
- Regular solid waste services delayed at first and ongoing disconnect between what franchise haulers and debris haulers are targeting for collection



## ATTENTION

**Residential Storm Debris  
Drop-Off Sites  
Closing November 20.**

**Normal yard waste  
facility locations  
and hours resuming  
November 20.**



**HCFLGov.net/SolidWaste**

# Challenges & Lessons Learned Continued...

- Collection in gated communities- right of entry and indemnification forms
- Increased number of homes and traffic congestion
- Need for more debris management sites
- Constant push for more collection assets
- Ensuring only residents utilize drop off sites
- Property damage cases
- Late setouts



# Open Panel Discussion

## Contact Me:

Travis Barnes, MPA, LEED AP

Sustainable Materials Management

813-209-3085 Office

[BarnesT@hillsboroughcounty.org](mailto:BarnesT@hillsboroughcounty.org)

[HCFLGov.net/Recycling](http://HCFLGov.net/Recycling)

[www.TampaBayRecycles.org](http://www.TampaBayRecycles.org)



Hillsborough  
County Florida