

The logo for the Solid Waste Association of North America (SWANA). The letters 'S', 'W', 'A', 'N', and 'A' are in a dark blue font. The letter 'W' is stylized with a green triangle pointing upwards, forming the letter's shape. Below the letters, the full name 'SOLID WASTE ASSOCIATION OF NORTH AMERICA' is written in a smaller, dark blue, sans-serif font.

SWANA

SOLID WASTE ASSOCIATION OF NORTH AMERICA

:The Vision Forward.

**Conversation with Amy Lestition Burke, MA, CAE, FASAE,
Executive Director/CEO**



SWANA
SOLID WASTE ASSOCIATION OF NORTH AMERICA



10K

MEMBERS

47

CHAPTERS

Members in

42

COUNTRIES



Region 5

765

MEMBERS

61

YOUNG PROFESSIONALS

167

CERTIFIED MEMBERS

Collection Systems

**HHW & CESQG
Collection Operations**

Composting Programs

**Integrated Solid Waste
Management Systems**

Landfill Operations

Recycling Systems

**Transfer Station
Systems**

**Zero Waste Principles
& Practices**



Life Member Recipients



**Pamela Day-
Kromer**



Mark Hammond



Robert Hauser



Timothy Hunt



Philip Richmond



Marc Rogoff



Warren Smith

SWANA Award Recipients

- ☆ **City of Orlando, Solid Waste, CEM TD Outstanding Awareness Campaign 2024**
- ☆ **Pinellas County Solid Waste, CEM TD Game Changing Tools 2024**
- ☆ **Marc Rogoff, C&T TD Distinguished Individual Achievement Award 2024**
- ☆ **Pinellas County Waste to Energy Facility, WCER TD Facility Excellence Award 2023**
- ☆ **Mateja Vidovic Klanac, 2023 Young Professional of the Year**
- ☆ **Nicole DiGiorgio, Young Professionals Leadership Academy Class of 2023**
- ☆ **Orange County, CEM Outstanding Awareness Campaign 2022**
- ☆ **Ashpreet Kaur, Robert P Stearns scholarship 2019**
- ☆ **Mark Hammond, Robert L Lawrence Distinguished Service Award 2018**
- ☆ **Nathan P. Mayer, P.E., Solid Waste Authority of Palm Beach County, Distinguished Achievement Award in Landfill Management 2018**



Tammy L. Hayes

Principal, CDM Smith

President
2024-2025 SWANA
Board of Directors



Daniel Cooper

Project Manager, SCS Engineers

Region 5 Director
2024-2025 SWANA Board of Directors



SWANA's strong foundation.

SWANA: Strong Foundation for Growth



**REAL COMMUNITY
ENGAGEMENT &
COMMITMENT.**



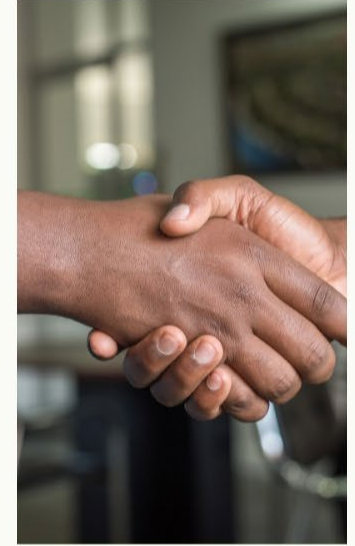
**RESOURCES
TO KEEP THE
PROFESSION
INFORMED &
SAFE.**



**TECHNICAL
KNOWLEDGE &
EXPERTISE.**



**PUBLIC POLICY
ADVOCACY.**



**TRUSTING
PARTNERSHIPS.**

SWANA: Profession Primed to Impact Society



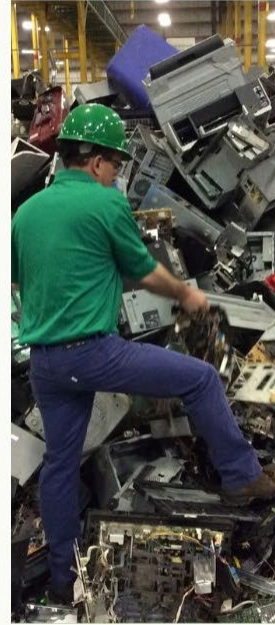
**GLOBAL
CLIMATE
CHANGE.**



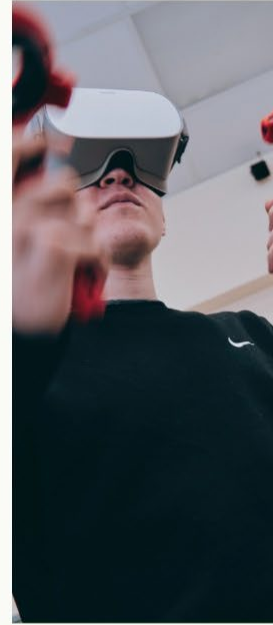
**MOVEMENT TO
EPR.**



**PLASTIC
POLLUTION.**



E-WASTE.



AI & TECH.



PFAS.

**THE SOLID WASTE & RESOURCE MANAGEMENT
INDUSTRY IS...**

**an
invaluable
profession.**



Solid Waste & Resource Management Industry Essential to Society



**Make modern life
convenient, safe, efficient
and sustainable.**



**Create cleaner, healthier
communities by providing
solutions to society's biggest
challenges.**

Solid Waste & Resource Management Industry Essential to Society



Leading on safety through training, industry innovation, and setting standards. The safety of our workers is our highest priority.



Pioneer a better future for communities across North America.

SWANA's Key Role:

Building a stronger industry



**Voice of our
industry and
who we
represent.**



**Convenings
and building
professional
networks.**



**Education,
training,
credentialing.**



**Partnering
with key
stakeholders.**



**Access to
expertise,
technical
knowledge.**

SWANA's Key Role:

How we lead



**Bring together industry
leaders from the public and
private sector.**



**Elevating industry's/workers'
importance.**



**Advocating for industry
priorities.**



Policy solutions.

SWANA's Key Role:

Where
we're
focused



Prioritizing safety.



**Championing progress on
sustainability.**



**Promoting professional
opportunities.**



**Delivering greater value to
members.**

Defining the Future



Innovation

Trends

Challenges

Solutions



SWANA 2023-2027 Strategic Plan

Forward, Together: SWANA Strategic Plan 2023- 2027



Get waste collection off the top 10 list of most dangerous jobs.



Become climate champions.



Reframe the perception of industry as employers of choice.



Continue to strengthen SWANA's infrastructure and financial viability.

Public Policy - Comments & Statements

- **Protections for passive receivers of PFAS**
- **EPA Final Rule on PFAS and PFOS as CERCLA Hazardous Substances**
- **Draft National Strategy for Reducing Food Loss and Waste and Recycling Organics**
- **EPA Draft Performance Standards for Large Municipal Waste Combustors**
- **Energy Tax Credit for Biogas Property Upgrading Equipment**

Public Policy - Comments & Statements

- **EPA Draft Emissions Factors for Municipal Solid Waste Landfills, AP-42**
- **EPA's Meaningful Involvement Policy**
- **Renewable Natural Gas Incentive Act of 2023, H.R. 2448**
- **Maryland Commission to Advance Lithium-Ion Battery Safety In Maryland**
- **Investing in Tomorrow's Workforce Act**
- **Solid Waste Industry for Climate Solutions (“SWICS”)/Greenhouse Gas Reporting Rule International**
- **Plastics Pollution Treaty**

Topics Top of Mind

- **PFAS**
- **Lithium-Ion Batteries**
- **Workforce Challenges**
- **Difficult-to-recycle Materials**
- **Waste to Energy Emissions**
- **Organics Recycling**
- **Landfill Emissions**
- **Biogas**
- **Regulatory Compliance Leachate Infrastructure Development**
- **Community Education & Outreach**



2025

A New Conference Experience



2025 Conference Name Member Vote & Input

Begins July 17, 2024

SWANA Annual Conference

Leverages the strong brand equity of SWANA.

SustainX Summit

Underscores SWANA's dedication to sustainability and being climate champions.

REcon

Stands at the forefront of SWANA's vision and strategic priority to advance from waste management to resource management.



SAFETY



SWANA Leading on Worker Safety

- Essential training and best practices
- Championing “Move Over” laws
- Setting the highest standard
- Holding ourselves accountable
- Leveraging technology to advance



SWANA Leading on Worker Safety:

Where we need help

- **Create new content.**
- **Help us update and enhance the safety resources available on SWANA's website.**
- **Contribute to training materials and/or a course on how to establish safety programs related to countering climate-related effects.**



SWANA Leading on Worker Safety:

Where we need help

- **Join the working group to discuss the proper management of lithium-ion batteries.**
- **Incorporate safety moments into your company's schedule.**
- **Promote the ARF 2020 report on "Employee, Commercial Hauler, and Self-Hauler Safety at Landfills" to members.**

SWANA Safety Resources



- **Training Courses**
- **Safety First newsletter**
- **"Five to Stay Alive" handout**
- **Backing Best Management Practices handout**
- **Safety Pledge**
- **Slow Down to Get Around resources**
- **Guide to Developing Lithium Battery Management Practices at MRFs**

Chapter Safety Ambassadors



- **George W. White, S.C.**
Solid Waste Operations Manager
Marion County BOCC
- **Earl Gloster**
President
Earl Gloster Consulting LLC

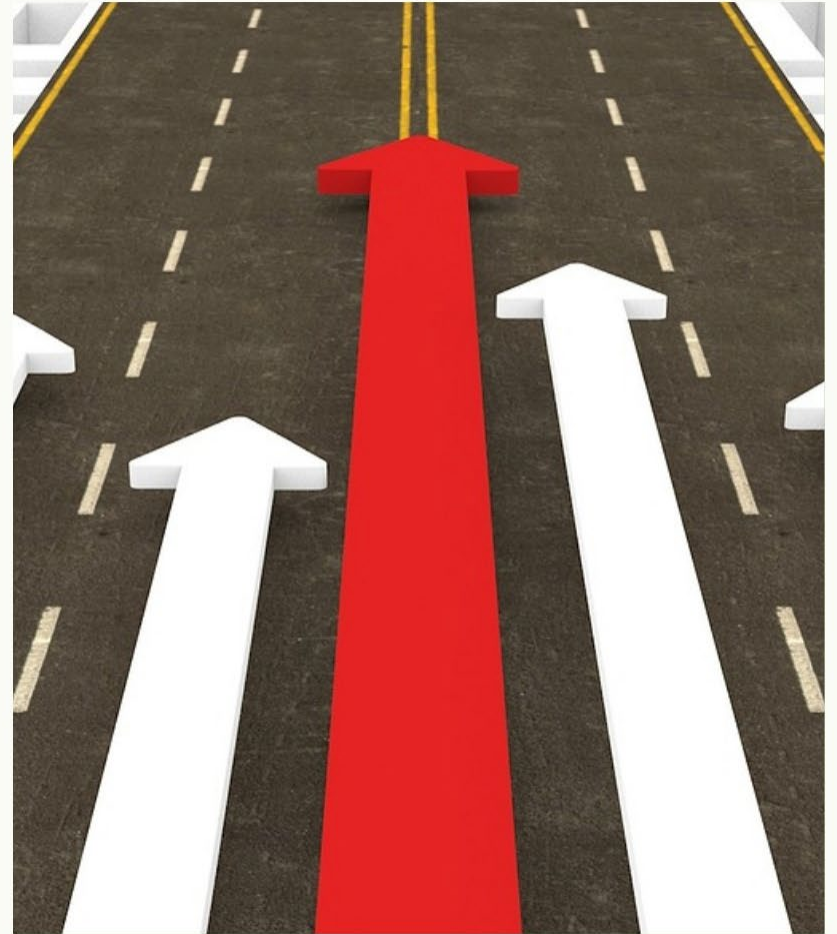
SWANA Journey



Build Strong Partnerships with SWANA Chapters.



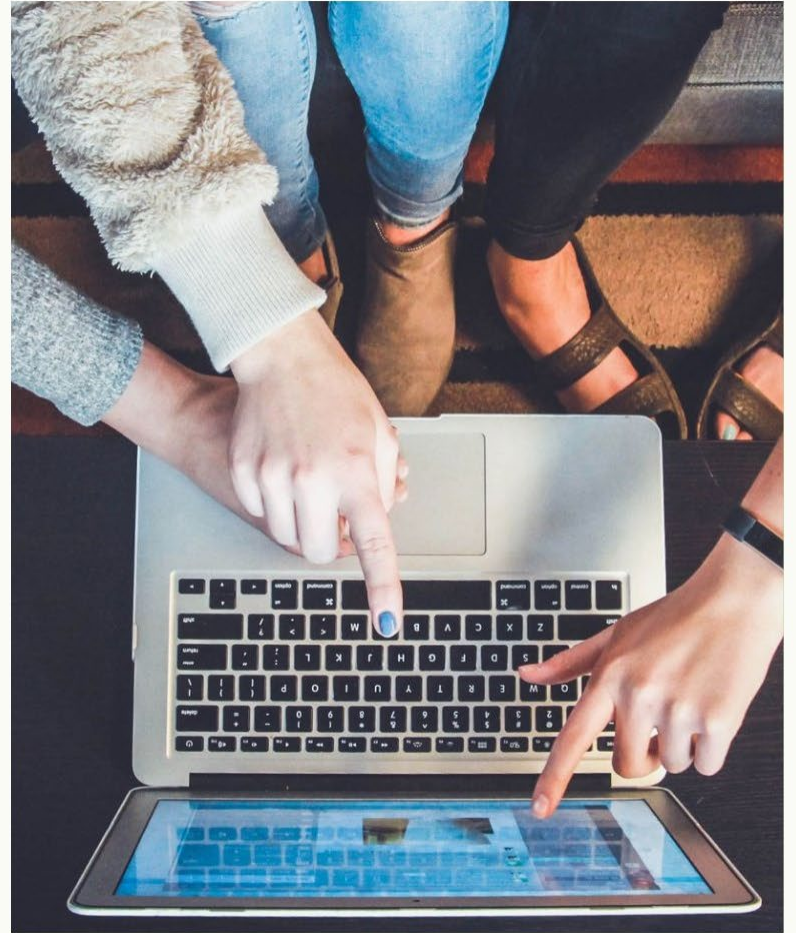
**SWANA is your
professional
community.**



**Valued and
sustainable
organization.**



**Expand the profession's
knowledge and skills
through programs,
resources, training,
certifications, etc.**



**Strengthen
member value.**



**Society knows
the strengths
and expertise
of our people.**



**Seize organizational
momentum and
expand our reach.**



**SWANA is
contemporary,
welcoming,
and inclusive.**





The Best of Both Worlds:
Integrating Leadership
Strategies with Technical
Innovations



REGISTER TODAY

October 21–24, 2024

WASTECON.ORG

Sign up for WASTECON updates.



- Exhibitor information
- Sponsorship opportunities
- Event announcements



Let's do
great things
together.

SWANA
SOLID WASTE ASSOCIATION OF NORTH AMERICA



Can't wait to hear from you.

Amy Lestition Burke, FASAE, CAE,
Executive Director/CEO, SWANA

✉ aburke@swana.org

☎ [240-494-2226](tel:240-494-2226)

🌐 www.swana.org

🌐 [www.linkedin.com/in/
amy-lestition-burke/](https://www.linkedin.com/in/amy-lestition-burke/)

