



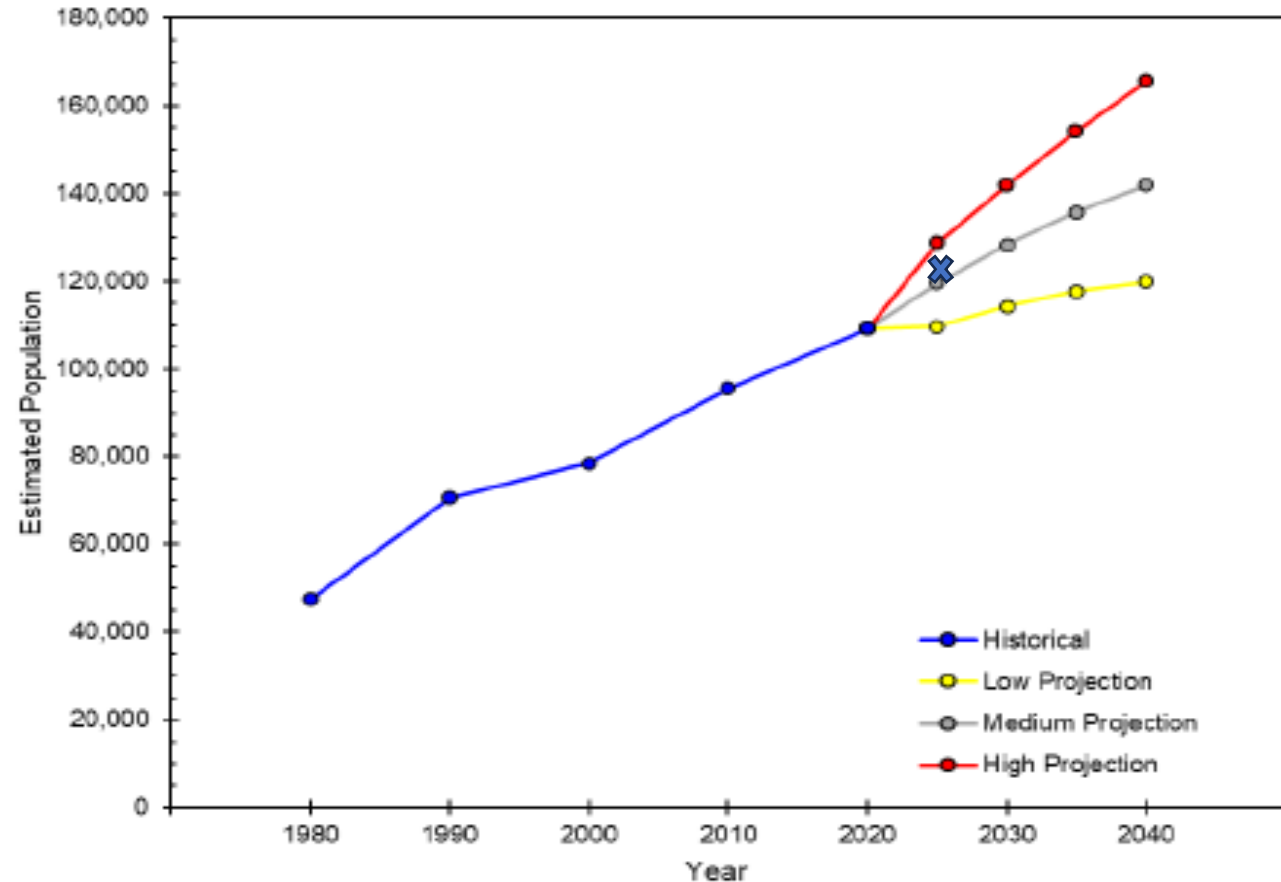
Transfer Station Project

When Why and Where?

When Should We Build

Should We Build?

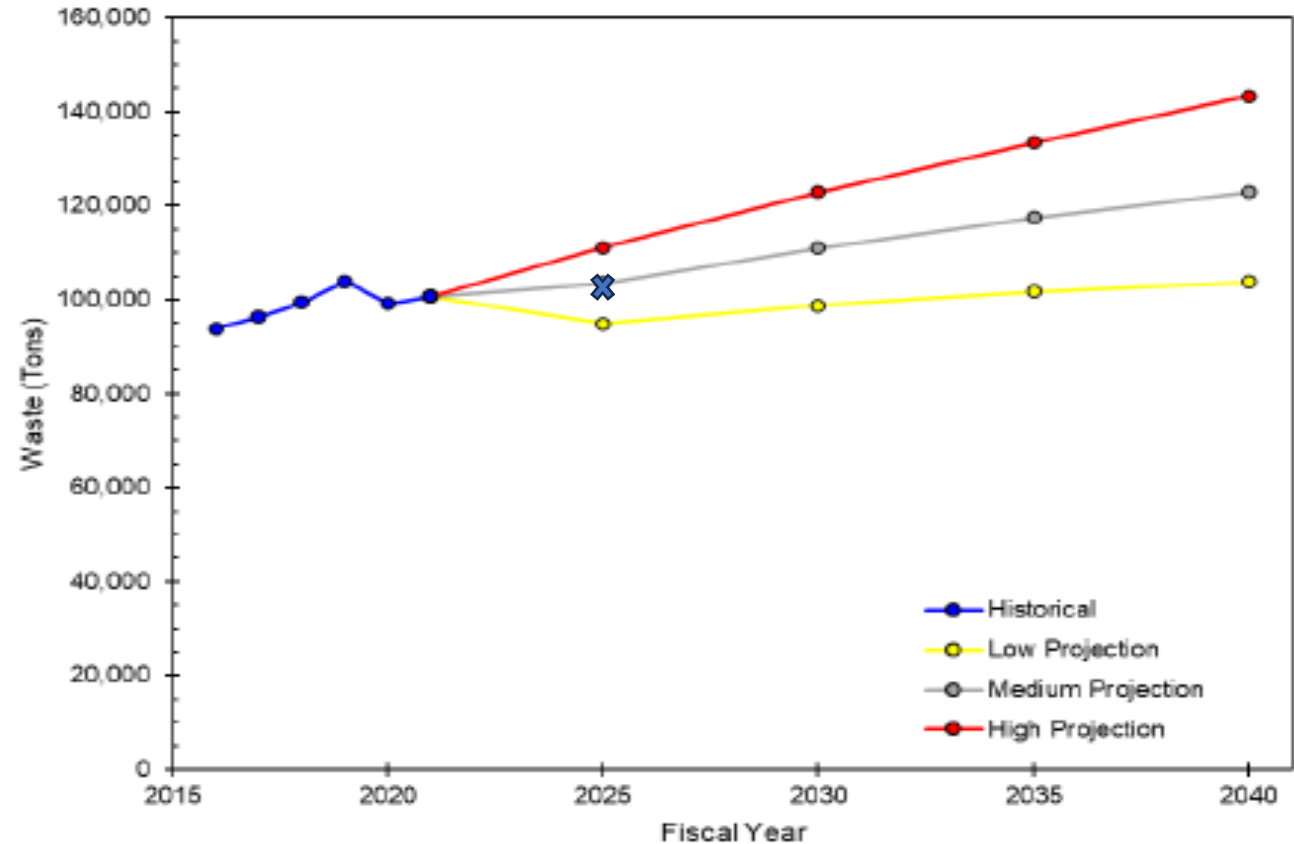
- When...
 - When city growth has the potential to affect efficiency
 - Lakeland ranks 8th of 100 in Lending Tree's fastest-growing U.S. metros



: Estimated Historical and Projected Population Within City of Lakeland City Limits

When...continued

- The Lakeland metro areas, population has climbed by 3.3% ranking the Lakeland area as the seventh highest among all U.S. metro areas
- Residential garbage tonnage has increased by 38% in 10 years.



Projected Flows of City of Lakeland Waste (Residential and Commercial Waste, Recycling and Yard Waste) Collected in Lakeland

Why Should We Build?



- Safety and equipment damage by direct hauling to the landfill has become significant
- Route growth management \$\$
- Recycling recovery – Greater access to recyclables-dominated commercial loads
- Flexibility – TS makes hauling to alternative sites feasible for Class I, Class III, C&D, and recyclables if needed
- Potential Enterprise Fund Revenue from local waste shed

Where...

Probably the most difficult question to answer

Sighting Checklist:

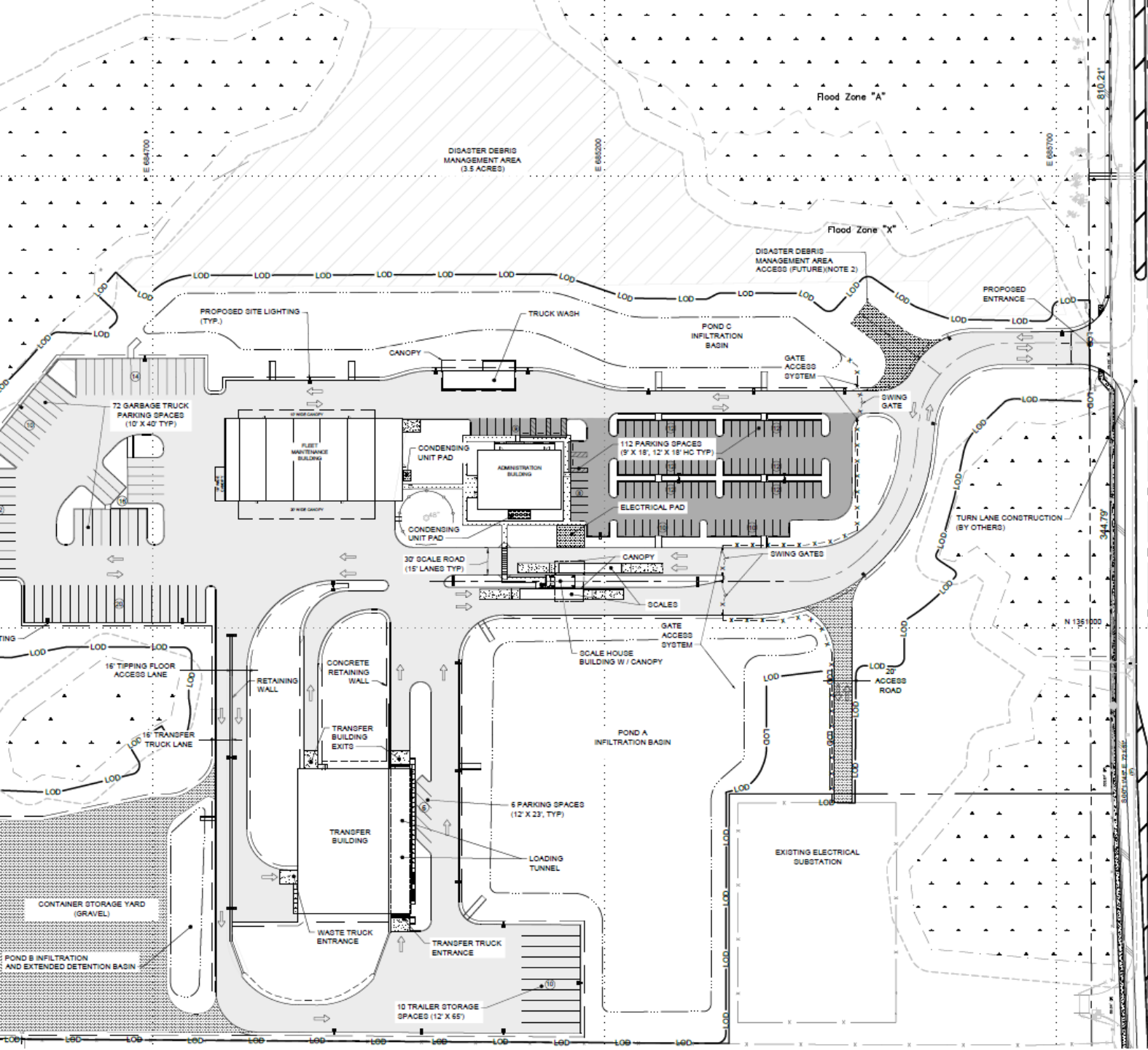
- ✓ Heavy industrial zoning
- ✓ Distance from sensitive areas
- ✓ Available real estate
- ✓ Find ways to address potential issues early
- ✓ Close to I-4, Hwy 92 and Hwy 33 for truck traffic



Growing Pains !!! The project expands...

- Solid waste operations continue to expand with additional trucks and personnel
- Fleet building and truck parking is at capacity managing 1450+ vehicles city-wide
- Fleet and SW are out of space due to location restrictions. Roads, train tracks, city cemeteries, other co-located municipal operations
- As I said, the project expands...where we are today!





The project expands...

- The project expands with the addition of a new administration building and solid waste fleet repair facility.
- The project is funded through a tax-free municipal bond as part of larger bond requirement for Lakeland Electric, Water and Wastewater projects.



Gene Ginn, Solid Waste & Recycling Manager

gene.ginn@lakelandgov.net

863-834-8777